

EPIDEMIOLOGICAL PROFILE OF SOUTH-WEST WOLLONGONG

Compiled by Jennifer Duncombe
Population Health Epidemiologist
June 2008

South Eastern Sydney Illawarra Health

ISBN 978-1-921525-02-5

Key words: Demographic, hospitalisations,
Sydney, Illawarra, New South Wales, Australia.

Suggested citation:

Duncombe J. Epidemiological profile of south-west Wollongong. Wollongong: South Eastern Sydney Illawarra Health, June 2008.

Published by South Eastern Sydney Illawarra Health, May 2008.

South Eastern Sydney Illawarra Health
Directorate of Population Health, Planning and Performance.

Building 39, Block B
University of Wollongong
WOLLONGONG NSW 2500

Locked Mail Bag 9
Unanderra NSW 2526
Telephone (02) 4221 6700
Facsimile (02) 4221 6722
Homepage
<http://www.sesiahs.health.nsw.gov.au/>

Copyright © South Eastern Sydney and Illawarra Area Health Service. This work is copyright. It may be reproduced in whole or part for study or training purposes subject to the inclusion of acknowledgement of the source. It may not be reproduced for commercial usage or sale. Reproduction for purposes other than those indicated above requires written permission from South Eastern Sydney and Illawarra Area Health Service.

Contents

| | |
|--|----|
| Tables | 4 |
| Figures | 5 |
| Executive Summary | 7 |
| Demographic information | 7 |
| Socioeconomic status | 7 |
| Health information | 7 |
| 1. Introduction | 9 |
| 2. Methods | 9 |
| 3. Demographic information | 10 |
| 3.1 Dapto | 10 |
| 3.2 Brownsville | 16 |
| 3.3 Farmborough Heights | 22 |
| 3.4 Horsley | 28 |
| 3.5 Kanahooka | 33 |
| 3.6 Koonawarra | 39 |
| 3.7 Unanderra | 45 |
| 4. Socioeconomic status | 51 |
| 5. Health information | 52 |
| 6. Appendix 1: 'Factors influencing health status' | 54 |

Tables

| | |
|---|----|
| Table 1 Population in Dapto by sex, 2006..... | 10 |
| Table 2 Marital status, Dapto, 2006..... | 12 |
| Table 3 Family characteristics, Dapto, 2006 | 14 |
| Table 4 Population in Brownsville by sex, 2006 | 16 |
| Table 5 Marital status, Brownsville, 2006..... | 18 |
| Table 6 Family characteristics, Brownsville, 2006..... | 20 |
| Table 7 Population in Farmborough by sex, 2006..... | 22 |
| Table 8 Marital status, Farmborough, 2006 | 24 |
| Table 9 Family characteristics, Farmborough, 2006 | 26 |
| Table 10 Population in Horsley by sex, 2006 | 28 |
| Table 11 Marital status, Horsley, 2006..... | 30 |
| Table 12 Family characteristics, Horsley, 2006..... | 31 |
| Table 13 Population of Kanahooka by sex, 2006..... | 33 |
| Table 14 Marital status, Kanahooka, 2006..... | 35 |
| Table 15 Family characteritics, Kanahooka, 2006 | 37 |
| Table 16 Population of Koonawarra by sex, 2006..... | 39 |
| Table 17 Marital status, Koonawarra, 2006..... | 41 |
| Table 18 Family characteristics, Koonawarra, 2006 | 43 |
| Table 19 Population in Unanderra by sex, 2006 | 45 |
| Table 20 Marital status, Unanderra, 2006 | 47 |
| Table 21 Family characteristics, Unanderra, 2006..... | 49 |

Figures

| | |
|--|----|
| Figure 1 Proportion of population by age group, Dapto, 2006..... | 10 |
| Figure 2 Country of birth, other than Australia, Dapto, 2006..... | 11 |
| Figure 3 Language spoken at home by most common response, Dapto only, 2006 | 11 |
| Figure 4 Religions in Dapto, 2006 | 12 |
| Figure 5 Occupations of people who are employed, Dapto, 2006 | 12 |
| Figure 6 Industries of employment, persons 15 years and older, Dapto, 2006..... | 13 |
| Figure 7 Educational attainment by age group, Dapto, 2006..... | 13 |
| Figure 8 Hours of unpaid child care per week by sex, Dapto, 2006 | 14 |
| Figure 9 Unpaid disability care per week by sex and age group, Dapto, 2006 | 15 |
| Figure 10 Proportion of population by age group, Brownsville, 2006 | 16 |
| Figure 11 Country of birth, excluding Australia, Brownsville, 2006..... | 17 |
| Figure 12 Language spoken at home by most common response, Brownsville, 2006..... | 17 |
| Figure 13 Religions in Brownsville, 2006 | 18 |
| Figure 14 Occupations of people who are employed, Brownsville, 2006..... | 19 |
| Figure 15 Industries of employment, persons 15 years and older, Brownsville, 2006..... | 19 |
| Figure 16 Educational attainment by age group, Brownsville, 2006 | 20 |
| Figure 17 Hours of unpaid child care per week by sex, Brownsville, 2006..... | 21 |
| Figure 18 Unpaid disability care per week by sex and age group, Brownsville, 2006 | 21 |
| Figure 19 Proportion of population in each age group, Farmborough, 2006 | 22 |
| Figure 20 Country of birth, other than Australia, Farmborough, 2006 | 23 |
| Figure 21 Language spoken at home by most common response, Farmborough, 2006 | 23 |
| Figure 22 Religions in Farmborough, 2006 | 24 |
| Figure 23 Occupations of people who are employed, Farmborough, 2006..... | 24 |
| Figure 24 Industries of employment, persons 15 years and older, Farmborough, 2006 | 25 |
| Figure 25 Educational attainment by age group, Farmborough, 2006 | 25 |
| Figure 26 Hours of unpaid child care per week by sex, Farmborough, 2006..... | 26 |
| Figure 27 Unpaid disability care per week by sex and age group, Farmborough, 2006..... | 27 |
| Figure 28 Proportion of population in each age group, Horsley, 2006 | 28 |
| Figure 29 Country of birth, other than Australia, Horsley, 2006 | 29 |
| Figure 30 Language spoken at home by most common response, Horsley, 2006 | 29 |
| Figure 31 Religions in Horsley, 2006..... | 29 |
| Figure 32 Occupations of people who are employed, Horsley, 2006 | 30 |
| Figure 33 Industries of employment, persons 15 years and older, Horsley, 2006..... | 31 |
| Figure 34 Educational attainment by age group, Horsley 2006..... | 31 |
| Figure 35 Hours of unpaid child care per week by sex, Horsley, 2006 | 32 |
| Figure 36 Unpaid disability care per week by sex and age group, Horsley, 2006..... | 32 |
| Figure 37 Proportion of Kanahooka residents by age group, 2006..... | 33 |
| Figure 38 Country of birth, other than Australia, Kanahooka, 2006..... | 34 |
| Figure 39 Language spoken at home by most common responses, Kanahooka, 2006..... | 34 |
| Figure 40 Religions in Kanahooka, 2006 | 35 |
| Figure 41 Occupation of people who are employed, Kanahooka, 2006..... | 36 |
| Figure 42 Industries of employment, persons 15 years and older, Kanahooka, 2006..... | 36 |
| Figure 43 Educational attainment by age group, Farmborough, 2006 | 37 |
| Figure 44 Hours of unpaid child care per week by sex, Kanahooka, 2006..... | 38 |
| Figure 45 Unpaid disability care per week by sex and age group, Kanahooka, 2006 | 38 |
| Figure 46 Proportion of population by age group, Koonawarra, 2006..... | 39 |
| Figure 47 Country of birth, other than Australia, Koonawarra, 2006..... | 40 |
| Figure 48 Language spoken at home by most common response, Koonawarra, 2006..... | 40 |
| Figure 49 Religions in Koonawarra, 2006..... | 41 |
| Figure 50 Occupation of people who are employed, Koonawarra, 2006 | 42 |
| Figure 51 Industries of employment, persons 15 years and older, Koonawarra residents, 2006 | 42 |
| Figure 52 Educational attainment by age group, Koonawarra, 2006..... | 43 |
| Figure 53 Hours of unpaid child care per week by sex Koonawarra, 2006..... | 44 |
| Figure 54 Unpaid disability care per week by sex and age group, Koonawarra, 2006 | 44 |
| Figure 55 Proportion of population by age group, Unanderra, 2006..... | 45 |

| | |
|---|----|
| Figure 56 Country of birth, other than Australia, Unanderra, 2006 | 46 |
| Figure 57 Language spoken at home by most common response, Unanderra, 2006 | 46 |
| Figure 58 Religions in Unanderra, 2006..... | 47 |
| Figure 59 Occupation of employed persons, Unanderra, 2006..... | 48 |
| Figure 60 Industry of employment, Koonawarra residents, 2006..... | 48 |
| Figure 61 Educational attainment by age group, Unanderra, 2006 | 49 |
| Figure 62 Hours of unpaid child care per week by sex, Unanderra, 2006..... | 50 |
| Figure 63 Unpaid disability care per week by sex and age group, Unanderra, 2006..... | 50 |
| Figure 64 Top ten reasons for hospital admissions, postcodes 2526 and 2530, 2007..... | 52 |

Executive Summary

Demographic information

- In 2006 in south-west Wollongong, the suburbs of Kanahooka, Koonawarra, Unanderra and Brownsville had predominately older populations, compared with the Australian average.
- Horsley had a young population, with 27.9% of residents 15 years of age or younger.
- In Koonawarra in 2006, there was more Aboriginal or Torres Strait Islander residents than the national average.
- Far more residents in south-west Wollongong were religious than non-religious in 2006.
- England and Scotland were the most common countries of birth, after Australia.
- Farmborough and Horsley had more 'couple families with children' than the Australian average, while Koonawarra and Unanderra had more 'one parent families'.
- The majority of people in the south-west Wollongong graduated from high school in year 10; however there is an increasing trend towards graduation in year 12.
- Median weekly incomes were much lower than the Australian average in Koonawarra and Unanderra.
- The median monthly housing loan repayment was much higher than the Australian average in Farmborough and Horsley
- There were also a high proportion of private dwellings that were separate houses: Farmborough had 97.9% separate houses.
- In all suburbs there were far more residents working in Basic Ferrous Metal Manufacturing than the national average.
- There were higher numbers of technicians and trade workers than the Australian average, except for Farmborough and Horsley.
- There were fewer professionals and managers than the national average, except in Farmborough and Horsley.
- Koonawarra had a higher unemployment rate than the national average in 2006 - 13.2%. Unanderra, Brownsville and Dapto were also well above the Australian average.

Socioeconomic status

- The Index of Relative Disadvantage (SEIFA) classified postcodes 2526 and 2530 as the 398th and 300th most disadvantaged postcodes in NSW in 2006.
- However, as there are more than 600 postcodes in NSW, these placings were about average.

Health information

- The leading cause of hospitalisations in south-west Wollongong in 2007 was attributed to 'factors affecting health status' (24.4%). This category includes: admission for examination, investigation, further testing, medical procedures and communicable diseases.
- The second most common cause for admission was 'Diseases of the digestive system' (10.6%), followed by 'Neoplasms' (8.0%).

- Postcode 2526 had higher top ten hospitalisation rates than 2530 in 2007, except for 'Diseases of the musculoskeletal system', 'Pregnancy, childbirth and puerperium' and 'injury, poisoning and other external causes'.
- The average length of stay for all hospitalisations was 3.7 days: 3.6 days for 2526 and 3.8 for 2530. Interestingly, this varied between males and females.

1. Introduction

This report is an epidemiological data profile of seven suburbs in south-west Wollongong: Dapto, Unanderra, Farmborough Heights, Koonawarra, Kanahooka, Brownsville and Horsley. It aims to provide stakeholders and community workers with a useful resource that may be used to better understand the population at hand and inform service delivery. Where possible, comparisons have been made with state and national data.

2. Methods

Data here used here were obtained from the Australian Bureau of Statistics' 2006 Census of Population and Housing, May 2008. Hospitalisations were accessed via NSW Health's Admitted Patients Data Collection (HOIST) for 1 January 2007- 31 December 2007. The HOIST system refers to a data access, analysis and reporting facility established and operated by the Centre for Epidemiology and Research, Division of Population Health, NSW Health Department.

As socioeconomic and hospitalisation data were not available by suburb, data in these chapters is for postcodes 2526 and 2530 only.

The reliability of Aboriginal and Torres Strait Islander data from the Admitted patients Data Collection (APDC) is questionable, as under-identification is common. This question is often not asked in the hospital setting, and some people may not choose to identify as Aboriginal or Torres Strait Islander background. The quality and completeness of country of birth data from the APDC is also questionable. Please interpret these findings with caution.

3. Demographic information

3.1 Dapto

Population

In the 2006 Census, there were 10,480 persons usually resident in Dapto - 48.9% were males and 51.1% were females (Table 1). Of the total population in Dapto 2.0% were Indigenous persons, compared with 2.3% Indigenous persons in Australia.

Table 1 Population in Dapto by sex, 2006

| | Dapto - N | Dapto - % | Aust - N | Aust - % |
|--------------------|-----------|-----------|------------|----------|
| Total males | 5,121 | 48.9% | 9,799,252 | 49.4% |
| Total females | 5,359 | 51.1% | 10,056,036 | 50.6% |
| Total persons* | 10,480 | - | 19,855,288 | - |
| Indigenous persons | 207 | 2.0% | 455,031 | 2.3% |

N = number of persons in region * = excluding overseas visitors % = per cent of persons in region

Of the population usually resident in Dapto 20.2% were children aged between 0-14 years, and 28.6% were persons aged 55 years and over (Figure 1). The median age of persons in Dapto was 38 years, one year older than the national average (37). While there were more middle aged people (25-54 years) in Dapto in 2006, this number was lower than the national average, while older people and younger people were similar or higher than the national average.

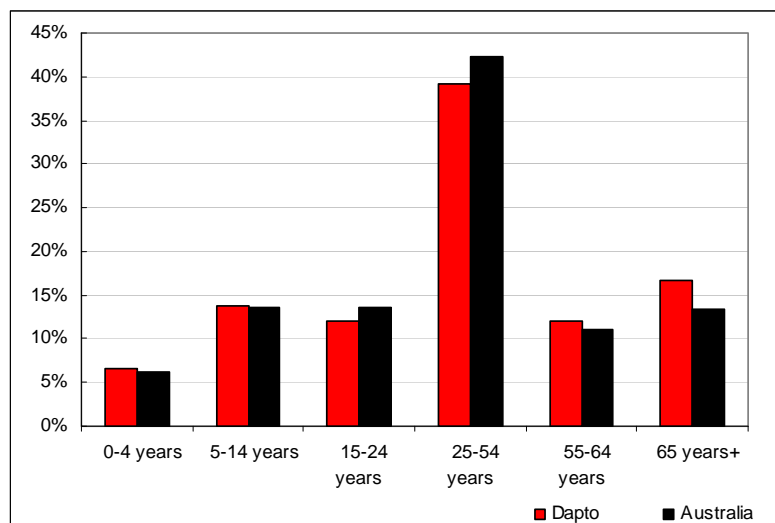


Figure 1 Proportion of population by age group, Dapto, 2006

Country of Birth

In the 2006 Census, 90.1% of persons usually resident in Dapto were Australian citizens, 19.2% were born overseas and 0.1% were overseas visitors. In the 2006 Census, 76.0% of persons usually resident in Dapto stated they were born in Australia (Figure 2). Other common responses within Dapto were: England 7.5%, Scotland 1.8%, Italy 0.7%, Germany 0.7% and New Zealand 0.6%.

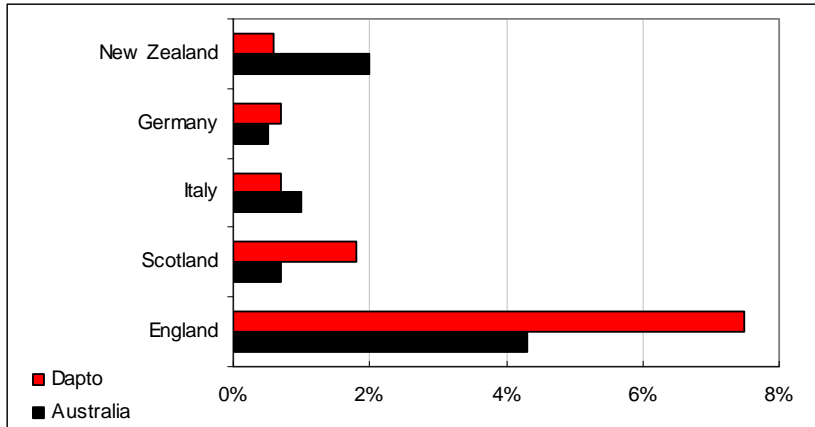


Figure 2 Country of birth, other than Australia, Dapto, 2006

In the 2006 Census, English was stated as the only language spoken at home by 90.0% of persons usually resident in Dapto (Figure 3). The most common languages other than English spoken at home were: Macedonian 0.9%, Italian 0.8%, Spanish 0.6%, Maltese 0.4% and German 0.4%.

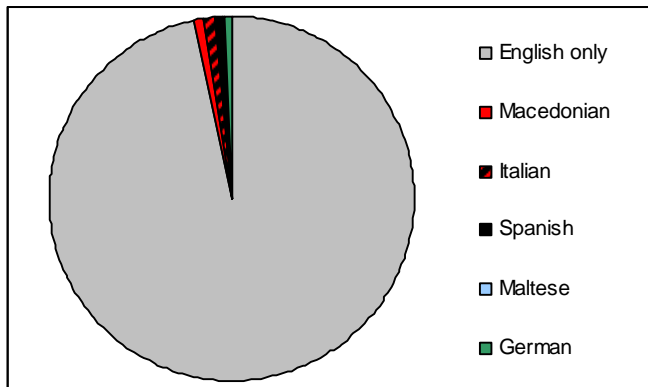


Figure 3 Language spoken at home by most common response, Dapto, 2006

Religion

In the 2006 Census, the most common responses for religious affiliation for persons usually resident in Dapto were Anglican 29.4%, Catholic 28.5%, No Religion 13.6%, Uniting Church 6.7% and Presbyterian and Reformed 4.0% (Figure 4).

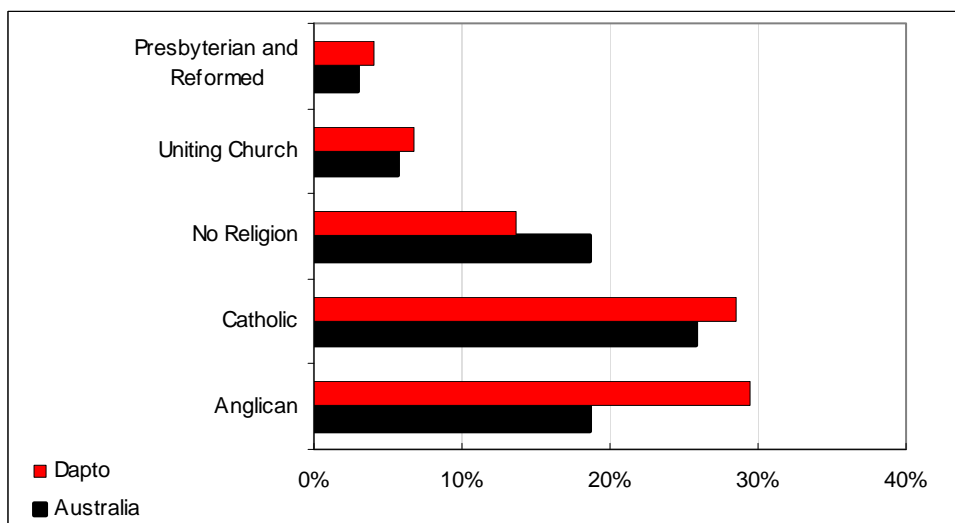


Figure 4 Religions in Dapto, 2006

Marital status

In the 2006 Census, 53.0% of persons aged 15 years and over usually resident in Dapto were married, 27.6% never married, 12.4% separated or divorced and 6.9% widowed (Table 2).

Table 2 Marital status, Dapto, 2006

| | Dapto - N | Dapto - % | Aust - N | Aust - % |
|-----------------------|-----------|-----------|-----------|----------|
| Married | 4,435 | 53.0% | 7,900,684 | 49.6% |
| Never married | 2,312 | 27.6% | 5,278,600 | 33.2% |
| Separated or divorced | 1,041 | 12.4% | 1,801,979 | 11.3% |
| Widowed | 577 | 6.9% | 936,813 | 5.9% |

Employment and occupation

During the week prior to the 2006 Census, 4,656 people aged 15 years and over who were usually resident in Dapto were in the labour force. Of these, 58.5% were employed full-time, 27.2% were employed part-time, 4.0% were employed but away from work, 2.4% were employed but did not state their hours worked and 8.0% were unemployed. There were 3,314 usual residents aged 15 years and over not in the labour force.

The most common responses for occupation for employed persons usually resident in Dapto in 2006 were Technicians and Trades Workers 20.2%, Clerical and Administrative Workers 15.3%, Labourers 11.7%, Professionals 11.5% and Machinery Operators and Drivers 11.3% (Figure 5).

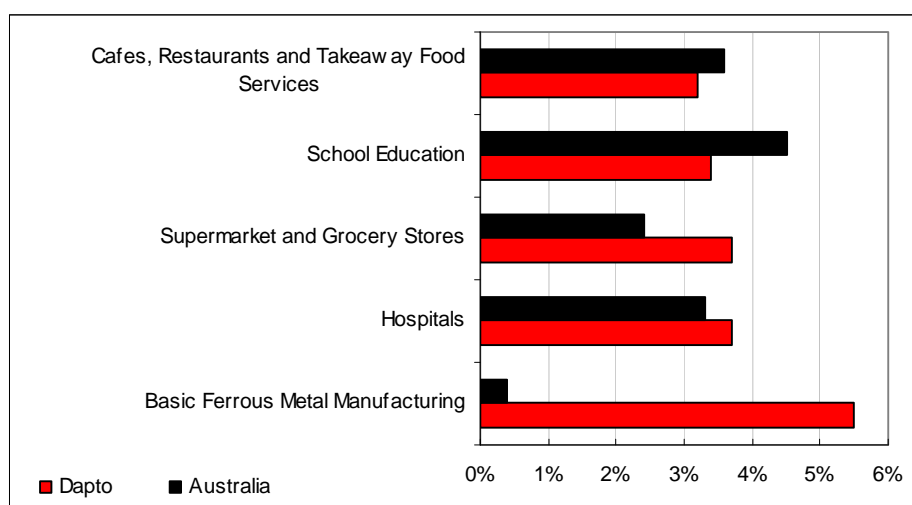


Figure 5 Occupations of people who are employed, Dapto, 2006

The most common industries of employment for persons aged 15 years and over usually resident in Dapto were: Basic Ferrous Metal Manufacturing 5.5%, Hospitals 3.7%, Supermarket and Grocery Stores 3.7%, School Education 3.4% and Cafes, Restaurants and Takeaway Food Services 3.2%.

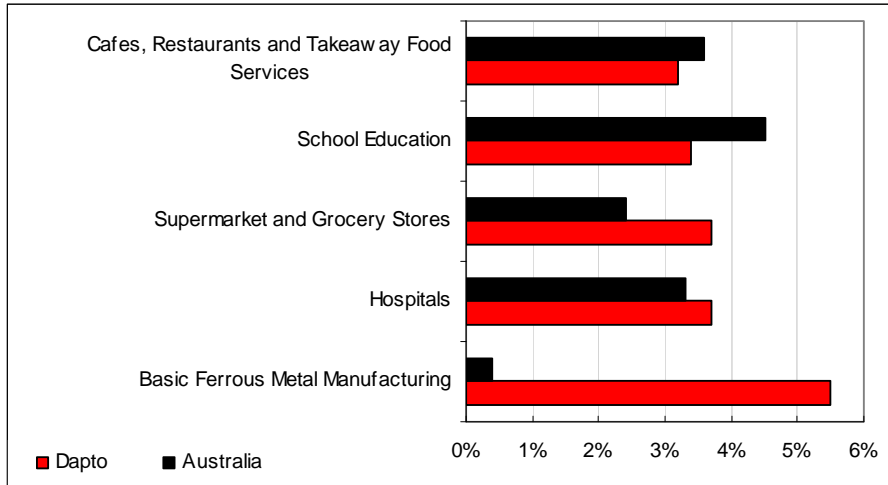


Figure 6 Industries of employment, persons 15 years and older, Dapto, 2006

Education

Interestingly, the majority of people in Dapto graduated from high school in year 10 (Figure 7). However, it seems that younger people are staying at school until year 12. With increasing age is the decreasing likelihood of staying at school until year 12: illustrated by the number of people aged 65 years and older who completed only year 8 or below. There is little difference between sexes.

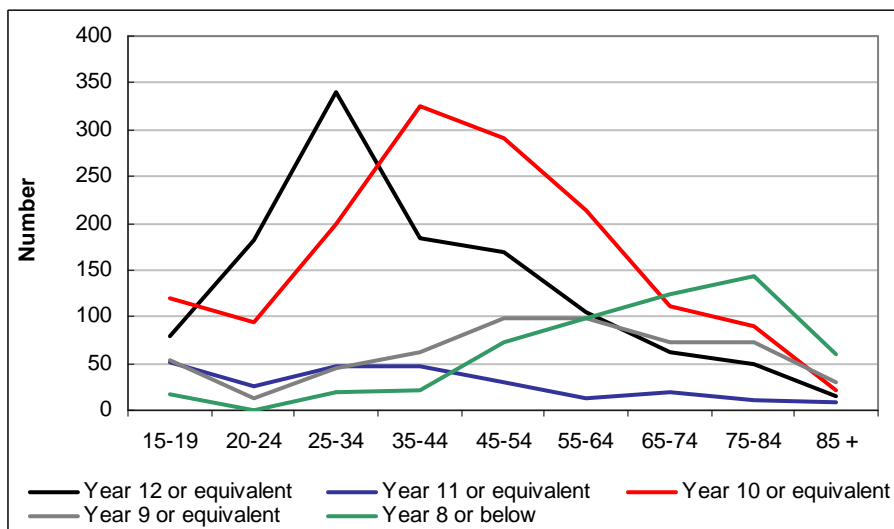


Figure 7 Educational attainment by age group, Dapto, 2006

Income

In Dapto, the median weekly individual income for persons aged 15 years and over who were usual residents was \$376, compared with \$466 in Australia. The median weekly household income was \$900, compared with \$1,027 in Australia. The median weekly family income was \$1,059, compared with \$1,171 in Australia.

Family and housing

In the 2006 Census, there were 3,056 families in Dapto: 42.1% were couple families with children, 38.5% were couple families without children, 17.9% were one parent families and 1.5% were other families (Table 3).

Table 3 Family characteristics, Dapto, 2006

| | Dapto - N | Dapto - % | Aust - N | Aust - % |
|----------------------------------|-----------|-----------|-----------|----------|
| Total families | 3,056 | - | 5,219,165 | - |
| Couple families with children | 1,286 | 42.1% | 2,362,582 | 45.3% |
| Couple families without children | 1,177 | 38.5% | 1,943,643 | 37.2% |
| One parent families | 546 | 17.9% | 823,254 | 15.8% |
| Other families | 47 | 1.5% | 89,686 | 1.7% |

There were 3,986 occupied private dwellings counted in Dapto in 2006: 88.4% were separate houses, 7.7% were semi-detached, row or terrace houses, townhouses etc, 3.7% were flats, units or apartments and 0.2% were other dwellings.

In Dapto, the median weekly rent was \$190, exactly the same as the Australian average. The median monthly housing loan repayment was \$1,430, compared to \$1,300 in Australia. The average household size was 2.6 and the average number of persons per bedroom was 1.1. In Dapto in 2006, 39.0% of occupied private dwellings were fully owned, 34.9% were being purchased and 21.5% were rented.

Carers

The number of people in Dapto who undertook unpaid child care in the week prior to 9 August 2006 was 1640 (16%); 823 (16%) males and 817 (15%) females. The greatest proportion of people provided unpaid child care for 35-39 and 40 hours per week (Figure 8).

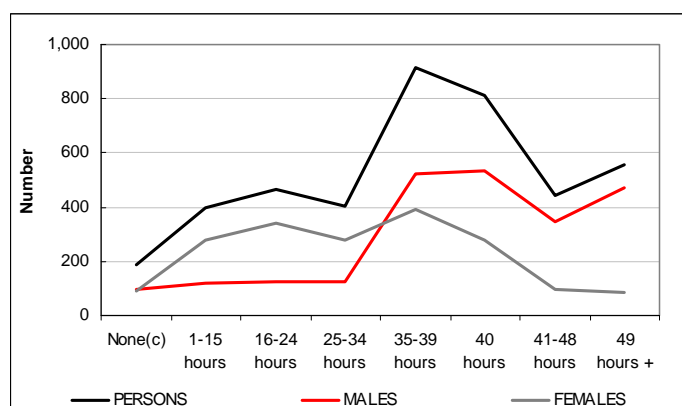


Figure 8 Hours of unpaid child care per week by sex, Dapto, 2006

The total number of people in Dapto who undertook unpaid disability care in the week prior to 9 August 2006 was 1005 (10%); 392 males (8%) and 613 females (11%) (Figure 9). The most common carers for disabled people were in the 35-44 year age group.

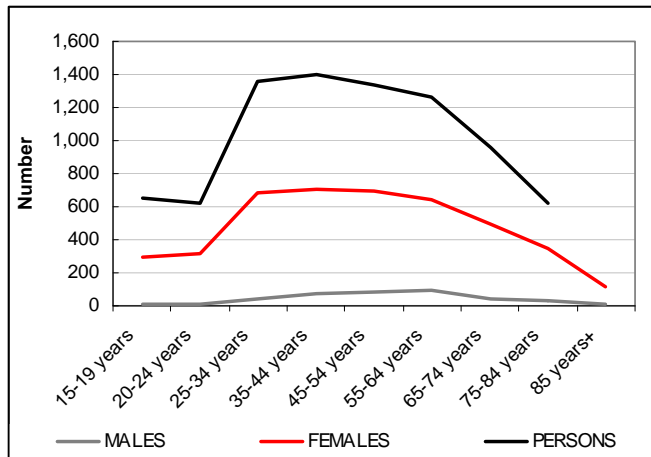


Figure 9 Unpaid disability care per week by sex and age group, Dapto, 2006

3.2 Brownsville

Population

In the 2006 Census there were 514 persons usually resident in Brownsville: 55.3% were males and 44.7% were females (Table 4). Of the total population in Brownsville 1.4% were Indigenous persons, compared with 2.3% Indigenous persons in Australia.

Table 4 Population in Brownsville by sex, 2006

| | Brownsville - N | Brownsville - % | Aust - N | Aust - % |
|--------------------|-----------------|-----------------|------------|----------|
| Total persons* | 514 | - | 19,855,288 | - |
| Total males | 284 | 55.3% | 9,799,252 | 49.4% |
| Total females | 230 | 44.7% | 10,056,036 | 50.6% |
| Indigenous persons | 7 | 1.4% | 455,031 | 2.3% |

N = number of persons in region * = excluding overseas visitors % = per cent of persons in region

In the 2006 Census 11.3% of the population usually resident in Brownsville were children aged between 0-14 years, and 34.6% were persons aged 55 years and over (Figure 10). The median age of persons in Brownsville was 45 years, compared with 37 years for persons in Australia.

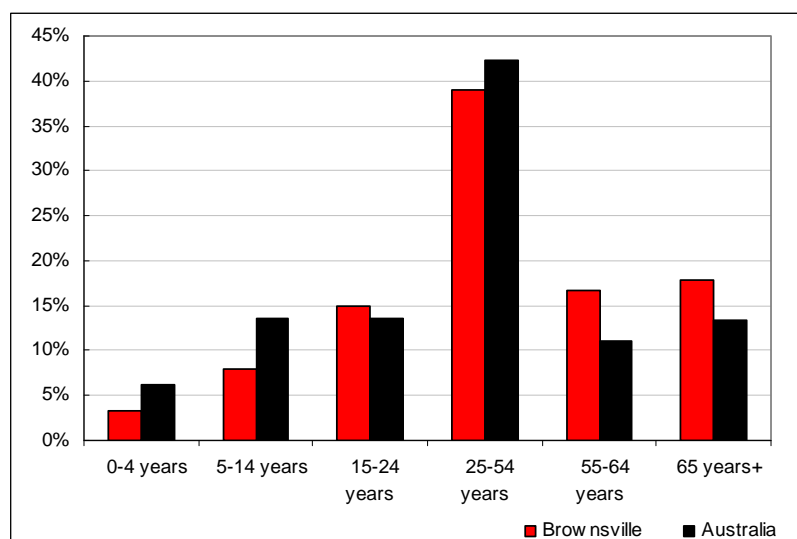


Figure 10 Proportion of population by age group, Brownsville, 2006

Country of Birth

In the 2006 Census, 90.5% of persons usually resident in Brownsville were Australian citizens, 21.4% were born overseas. Interestingly Brownsville had no overseas visitors.

In the 2006 Census, 72.6% of persons usually resident in Brownsville stated they were born in Australia (Figure 11). Other common responses within Brownsville were: England 9.7%, Scotland 3.3%, New Zealand 1.4%, Netherlands 1.2% and Wales 1.0%.

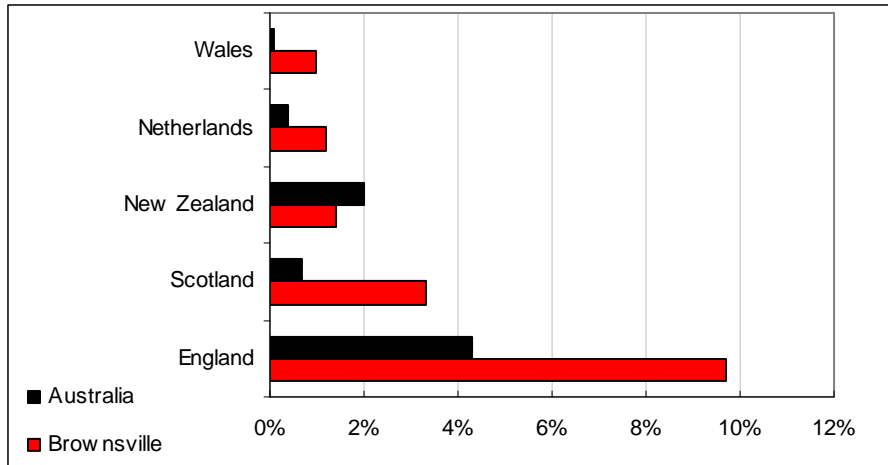


Figure 11 Country of birth, excluding Australia, Brownsville, 2006

In the 2006 Census, English was stated as the only language spoken at home by 92.4% of persons usually resident in Brownsville (Figure 12). The most common languages other than English spoken at home were: Spanish 1.2%, Polish 0.8%, Shona 0.8%, German 0.6% and Italian 0.6%.

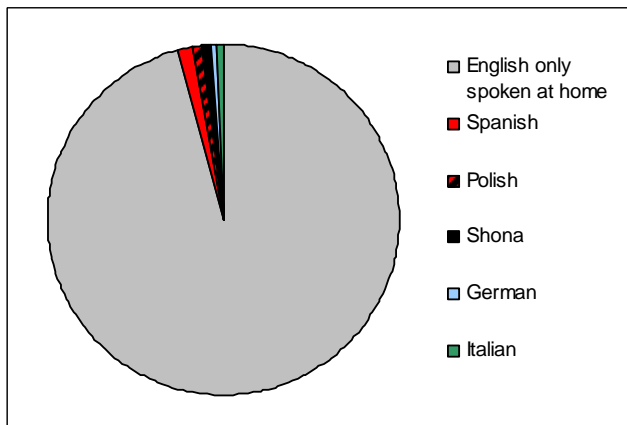


Figure 12 Language spoken at home by most common response, Brownsville, 2006

Religion

In the 2006 Census, the most common responses for religious affiliation for persons usually resident in Brownsville were Anglican 35.6%, Catholic 24.1%, No Religion 14.2%, Uniting Church 5.1% and Presbyterian and Reformed 4.5% (Figure 13).

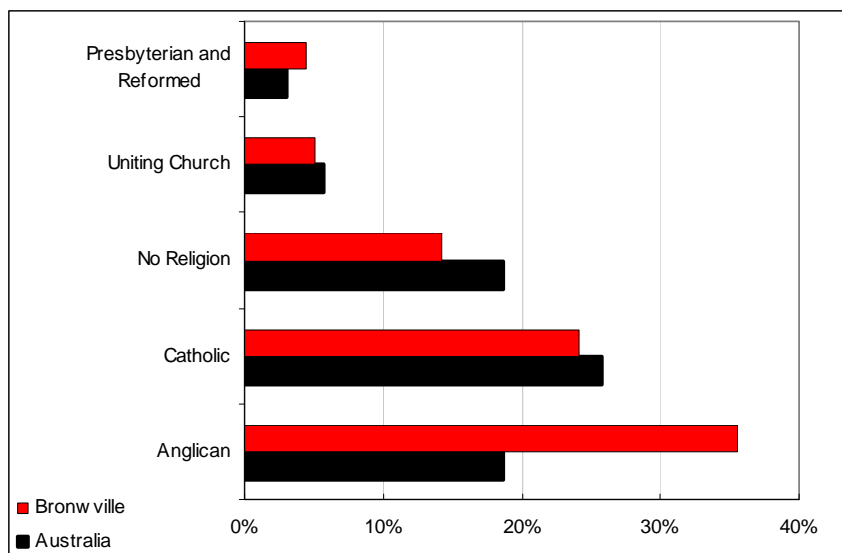


Figure 13 Religions in Brownsville, 2006

Marital status

In the 2006 Census, 45.1% of persons aged 15 years and over usually resident in Brownsville were married, 35.4% never married, 14.3% separated or divorced and 5.5% widowed (Table 5).

Table 5 Marital status, Brownsville, 2006

| | Brownsville - N | Brownsville - % | Aust - N | Aust - % |
|-----------------------|-----------------|-----------------|-----------|----------|
| Married | 205 | 45.1% | 7,900,684 | 49.6% |
| Never married | 161 | 35.4% | 5,278,600 | 33.2% |
| Separated or divorced | 65 | 14.3% | 1,801,979 | 11.3% |
| Widowed | 25 | 5.5% | 936,813 | 5.9% |

Employment and occupation

During the week prior to the 2006 Census, 238 people aged 15 years and over who were usually resident in Brownsville were in the labour force. Of these, 63.4% were employed full-time, 24.4% were employed part-time, 4.2% were employed but away from work and 8.0% were unemployed. There were 195 usual residents aged 15 years and over not in the labour force.

In the 2006 Census, the most common responses for occupation for employed persons usually resident in Brownsville were: Technicians and Trades Workers 19.2%, Professionals 15.1%, Labourers 13.2%, Machinery Operators and Drivers 12.8% and Managers 11.9% (Figure 14). Compared to Australia, Brownsville has a large number of “blue collar” workers and fewer professionals and managers.

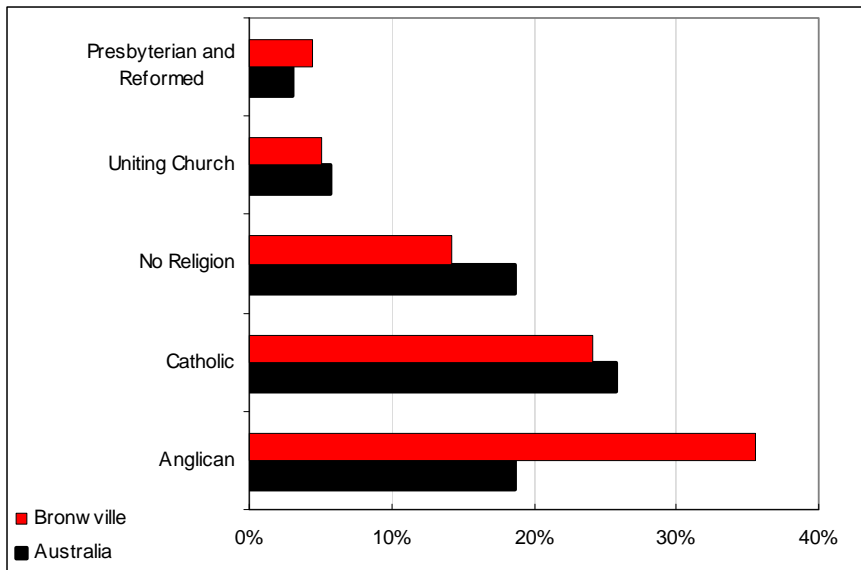


Figure 14 Occupations of people who are employed, Brownsville, 2006

In the 2006 Census, the most common industries of employment for persons aged 15 years and over usually resident in Brownsville were: Basic Ferrous Metal Manufacturing 6.8%, Supermarket and Grocery Stores 5.0%, School Education 3.7%, Road Freight Transport 3.2% and Cafes, Restaurants and Takeaway Food Services 2.7% (Figure 15). Brownsville has far more residents working in the manufacturing of basic ferrous metals and in supermarkets and grocery stores than the Australian average.

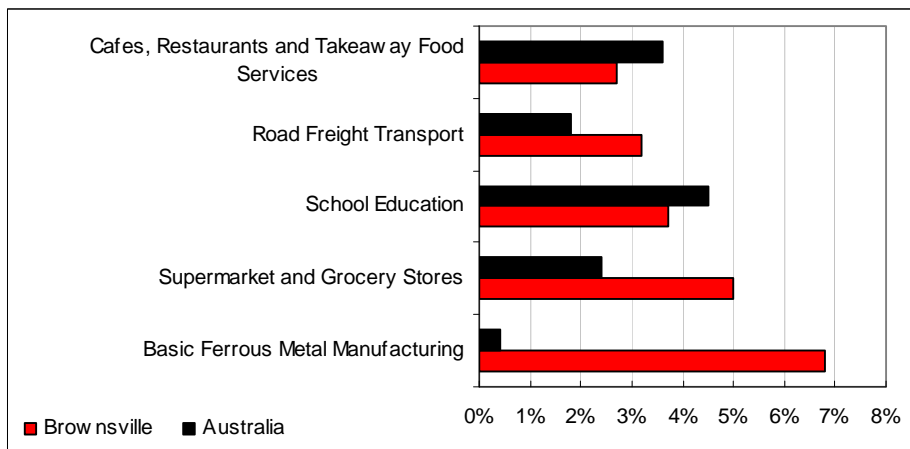


Figure 15 Industries of employment, persons 15 years and older, Brownsville, 2006

Education

Interestingly, the majority of people in Brownsville graduated from high school in year 10 (Figure 16). However, it seems that younger people are staying at school until year 12. With increasing age is the decreasing likelihood of staying at school until year 12: illustrated by the number of people aged 65 years and older who completed only year 8 or below. There is little difference between sexes.

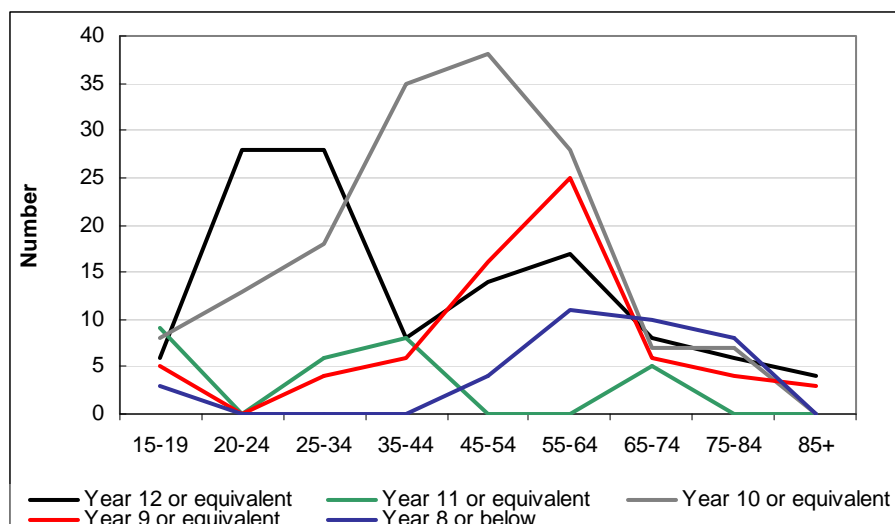


Figure 16 Educational attainment by age group, Brownsville, 2006

Income

In Brownsville, the median weekly individual income for persons aged 15 years and over who were usual residents was \$352, compared with \$466 in Australia. The median weekly household income was \$654, compared with \$1,027 in Australia. The median weekly family income was \$1,006, compared with \$1,171 in Australia.

Family and housing

In the 2006 Census, there were 137 families in Brownsville: 35.0% were couple families with children, 43.8% were couple families without children and 21.2% were one parent families (Table 6). There were a larger proportion of one parent families and couples without children in Brownsville than Australia.

Table 6 Family characteristics, Brownsville, 2006

| | Brownsville - N | Brownsville - % | Aust - N | Aust - % |
|----------------------------------|-----------------|-----------------|-----------|----------|
| Total families | 137 | - | 5,219,165 | - |
| Couple families with children | 48 | 35.0% | 2,362,582 | 45.3% |
| Couple families without children | 60 | 43.8% | 1,943,643 | 37.2% |
| One parent families | 29 | 21.2% | 823,254 | 15.8% |
| Other families | 0 | 0% | 89,686 | 1.7% |

In the 2006 Census there were 247 occupied private dwellings counted in Brownsville: 56.3% were separate houses and 43.7% were flats, units or apartments.

In Brownsville, the median weekly rent was \$150, compared to \$190 in Australia. The median monthly housing loan repayment was \$1,225, compared to \$1,300 in Australia. The average household size was 2.0 and the average number of persons per bedroom was 1.1.

Carers

The number of people in Brownsville who undertook unpaid child care in the week prior to 9 August 2006 was 59 (11%); 24 males (8%) and 35 females (15%). The greatest proportion of people provided unpaid child care for 40 hours per week (Figure 17).

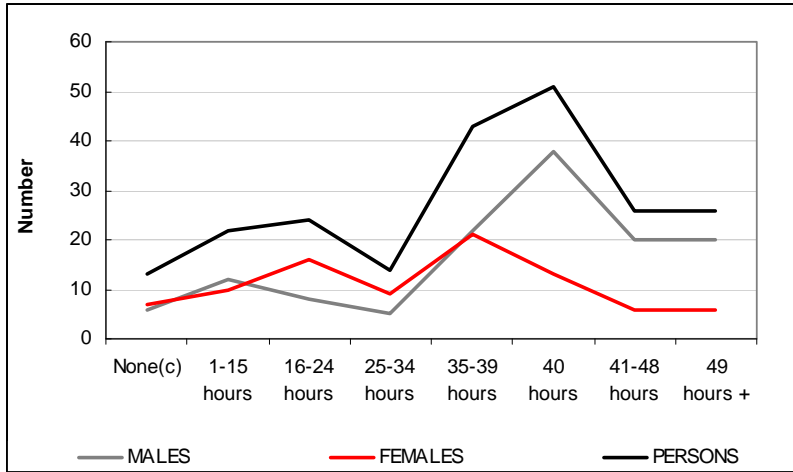


Figure 17 Hours of unpaid child care per week by sex, Brownsville, 2006

The total number of people in Brownsville who undertook unpaid disability care in the week prior to 9 August 2006 was 47 (9%); 22 (8%) males and 25 (11%) females (Figure 18). The most common carers for disabled people were in the 55-64 year age group.

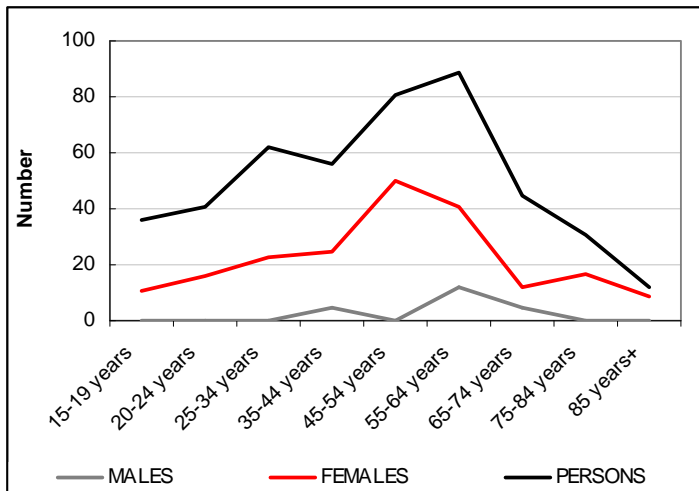


Figure 18 Unpaid disability care per week by sex and age group, Brownsville, 2006

3.3 Farmborough Heights

Population

In the 2006 Census, there were 3,854 persons usually resident in Farmborough Heights: 49.0% were males and 51.0% were females (Table 7). Of the total population in Farmborough Heights 1.1% were Indigenous persons, compared with 2.3% Indigenous persons in Australia.

Table 7 Population in Farmborough by sex, 2006

| | Farmborough - N | Farmborough - % | Aust - N | Aust - % |
|--------------------|-----------------|-----------------|------------|----------|
| Total persons* | 3,854 | - | 19,855,288 | - |
| Total males | 1,887 | 49.0% | 9,799,252 | 49.4% |
| Total females | 1,967 | 51.0% | 10,056,036 | 50.6% |
| Indigenous persons | 43 | 1.1% | 455,031 | 2.3% |

N = number of persons in region * = excluding overseas visitors % = per cent of persons in region

In the 2006 Census 22.9% of the population usually resident in Farmborough Heights were children aged between 0-14 years, and 19.5% were persons aged 55 years and over (Figure 19). The median age of persons in Farmborough Heights was 34 years, compared with 37 years for persons in Australia.

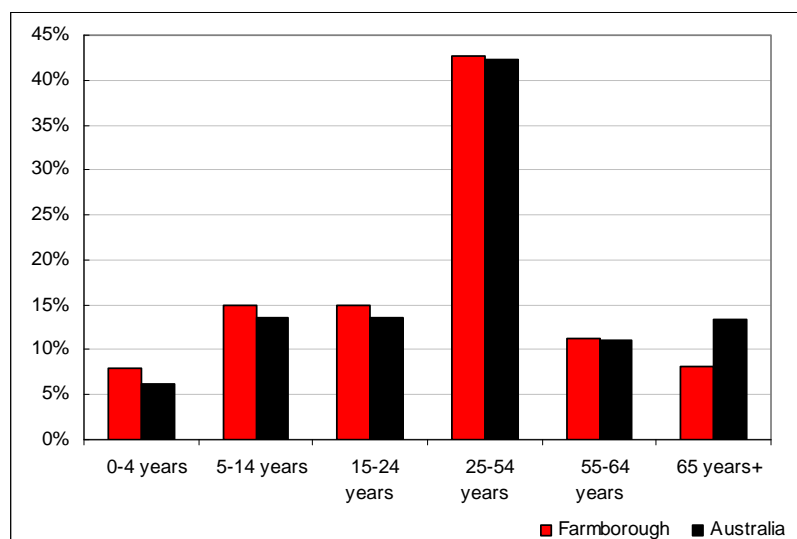


Figure 19 Proportion of population in each age group, Farmborough, 2006

Country of Birth

In the 2006 Census, 88.4% of persons usually resident in Farmborough Heights were Australian citizens, 17.1% were born overseas and 0.5% were overseas visitors. In the 2006 Census, 74.4% of persons usually resident in Farmborough Heights stated they were born in Australia. Other common responses within Farmborough Heights were: England 4.4%, Former Yugoslav Republic of Macedonia 1.6%, Italy 1.3%, Germany 0.8% and Scotland 0.7% (Figure 20).

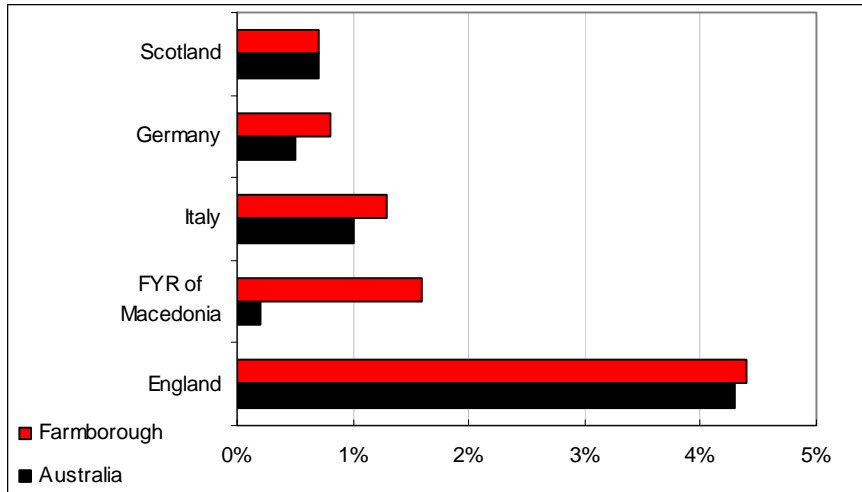


Figure 20 Country of birth, other than Australia, Farmborough, 2006

In the 2006 Census, English was stated as the only language spoken at home by 80.0% of persons usually resident in Farmborough Heights. The most common languages other than English spoken at home were: Macedonian 2.6%, Italian 2.2%, Spanish 1.3%, Greek 1.1% and Serbian 0.8% (Figure 21).

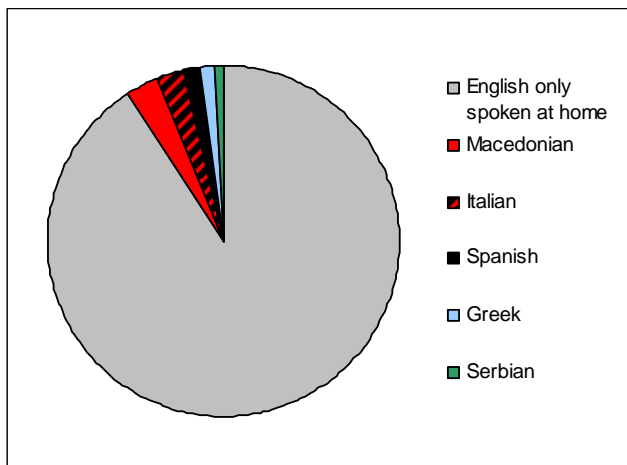


Figure 21 Language spoken at home by most common response, Farmborough, 2006

Religion

In the 2006 Census, the most common responses for religious affiliation for persons usually resident in Farmborough Heights were Catholic 29.0%, Anglican 22.2%, No Religion 11.8%, Eastern Orthodox 6.1% and Uniting Church 5.3% (Figure 22).

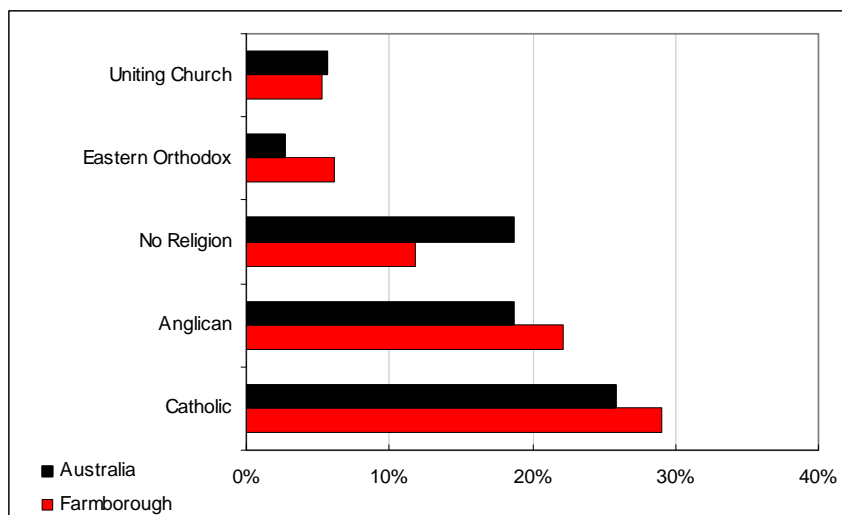


Figure 22 Religions in Farmborough, 2006

Marital status

In the 2006 Census, 59.4% of persons aged 15 years and over usually resident in Farmborough Heights were married, 29.0% never married, 7.7% separated or divorced and 3.7% widowed (Table 8).

Table 8 Marital status, Farmborough, 2006

| | Farmborough - N | Farmborough - % | Aust - N | Aust - % |
|-----------------------|-----------------|-----------------|-----------|----------|
| Married | 1,767 | 59.4% | 7,900,684 | 49.6% |
| Never married | 861 | 29.0% | 5,278,600 | 33.2% |
| Separated or divorced | 229 | 7.7% | 1,801,979 | 11.3% |
| Widowed | 110 | 3.7% | 936,813 | 5.9% |

Employment and occupation

During the week prior to the 2006 Census, 1,900 people aged 15 years and over who were usually resident in Farmborough Heights were in the labour force. Of these, 58.7% were employed full-time, 30.5% were employed part-time, 3.8% were employed but away from work, 2.4% were employed but did not state their hours worked and 4.5% were unemployed. There were 858 usual residents aged 15 years and over not in the labour force.

In the 2006 Census, the most common responses for occupation for employed persons usually resident in Farmborough Heights were: Professionals 23.1%, Technicians and Trades Workers 16.5%, Clerical and Administrative Workers 16.3%, Sales Workers 10.2% and Managers 9.5% (Figure 23).

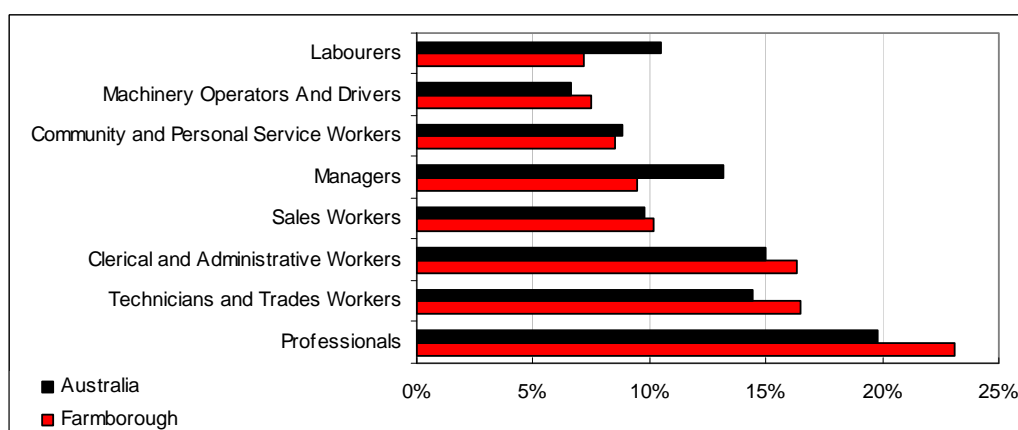


Figure 23 Occupations of people who are employed, Farmborough, 2006

In the 2006 Census, the most common industries of employment for persons aged 15 years and over usually resident in Farmborough Heights were Basic Ferrous Metal Manufacturing 7.9%, School Education 6.2%, Hospitals 3.6%, Cafes, Restaurants and Takeaway Food Services 3.1% and Tertiary Education 2.6% (Figure 24).

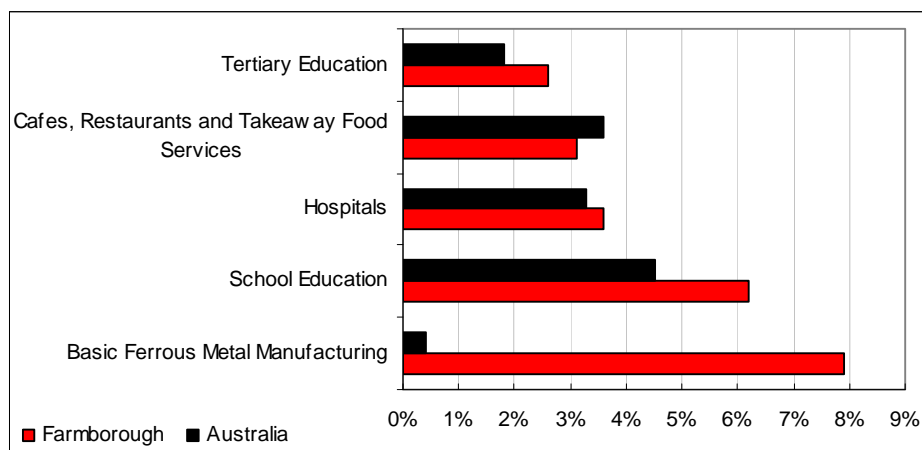


Figure 24 Industries of employment, persons 15 years and older, Farmborough, 2006

Education

The majority of people in Farmborough graduated from high school in year 12 (Figure 25). However, it seems that older people graduated from high school in year 11 or lower. In fact, in the 75-84 and 85+ age groups, graduating from high school in year 8 or below was the most common response.

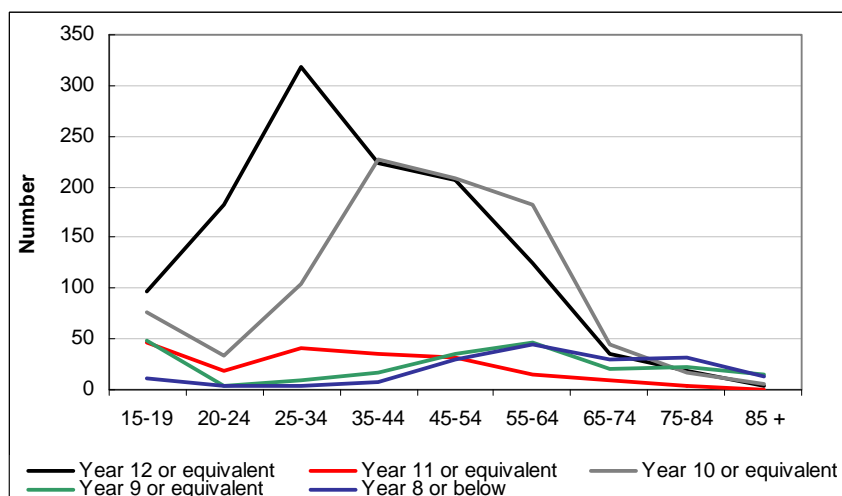


Figure 25 Educational attainment by age group, Farmborough, 2006

Income

In Farmborough Heights, the median weekly individual income for persons aged 15 years and over who were usual residents was \$490, compared with \$466 in Australia. The median weekly household income was \$1,345, compared with \$1,027 in Australia. The median weekly family income was \$1,464, compared with \$1,171 in Australia.

Family and housing

In the 2006 Census, there were 1,007 families in Farmborough Heights : 58.4% were couple families with children, 30.5% were couple families without children, 10.8% were one parent families and 0.3% were other families (Table 9).

Table 9 Family characteristics, Farmborough, 2006

| | Farmborough - N | Farmborough - % | Aust - N | Aust - % |
|----------------------------------|-----------------|-----------------|-----------|----------|
| Total families | 1,007 | - | 5,219,165 | - |
| Couple families with children | 588 | 58.4% | 2,362,582 | 45.3% |
| Couple families without children | 307 | 30.5% | 1,943,643 | 37.2% |
| One parent families | 109 | 10.8% | 823,254 | 15.8% |
| Other families | 3 | 0.3% | 89,686 | 1.7% |

In the 2006 Census there were 1,241 occupied private dwellings counted in Farmborough Heights : 97.9% were separate houses, 1.0% were semi-detached, row or terrace houses, townhouses etc, 1.1% were flats, units or apartments and 0.0% were other dwellings. In Farmborough Heights , the median weekly rent was \$200, compared to \$190 in Australia. The median monthly housing loan repayment was \$1,500, compared to \$1,300 in Australia. The average household size was 3.0 and the average number of persons per bedroom was 1.1.

In Farmborough Heights, 36.4% of occupied private dwellings were fully owned, 46.7% were being purchased and 8.7% were rented. In the 2006 Census in Farmborough Heights, 80.2% of occupied private dwellings were family households, 12.8% were lone person households and 1.0% were group households.

Carers

The number of people in Farmborough who undertook unpaid child care in the week prior to 9 August 2006 was 694 (18%); 355 (19%) males and 339 (17%) females. The greatest proportion of people provided unpaid child care for 35-39 hours per week (Figure 26).

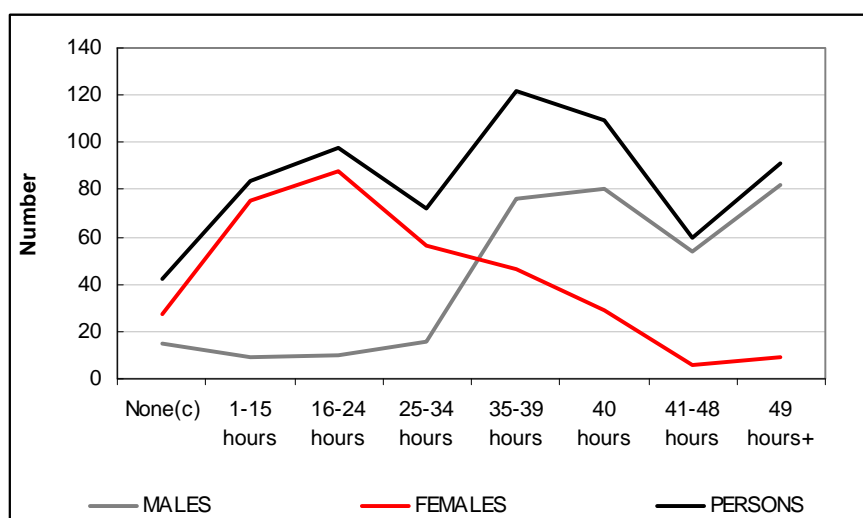


Figure 26 Hours of unpaid child care per week by sex, Farmborough, 2006

The total number of people in Farmborough who undertook unpaid disability care in the week prior to 9 August 2006 was 310 (8%); 110 males (6%) and 200 females (10%) (Figure 27). The most common carers for disabled people were in the 35-44 and 55-64 year age groups.

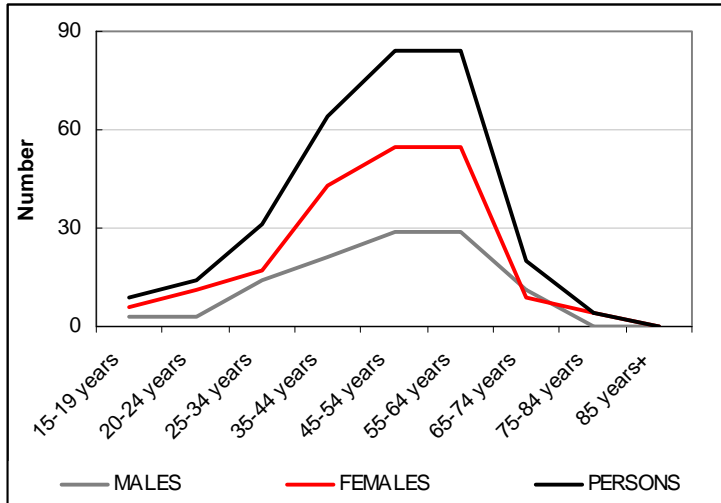


Figure 27 Unpaid disability care per week by sex and age group, Farmborough, 2006

3.4 Horsley

Population

In the 2006 Census there were 6,798 persons usually resident in Horsley: 49.6% were males and 50.4% were females (Table 10). Of the total population in Horsley 1.5% were Indigenous persons, compared with 2.3% Indigenous persons in Australia.

Table 10 Population in Horsley by sex, 2006

| | Horsley - N | Horsley - % | Aust - N | Aust - % |
|--------------------|-------------|-------------|------------|----------|
| Total persons* | 6,798 | - | 19,855,288 | - |
| Total males | 3,373 | 49.6% | 9,799,252 | 49.4% |
| Total females | 3,425 | 50.4% | 10,056,036 | 50.6% |
| Indigenous persons | 100 | 1.5% | 455,031 | 2.3% |

N = number of persons in region * = excluding overseas visitors % = per cent of persons in region

In the 2006 Census 27.9% of the population usually resident in Horsley were children aged between 0-14 years, and 13.2% were persons aged 55 years and over (Figure 28). The median age of persons in Horsley was 32 years, compared with 37 years for persons in Australia.

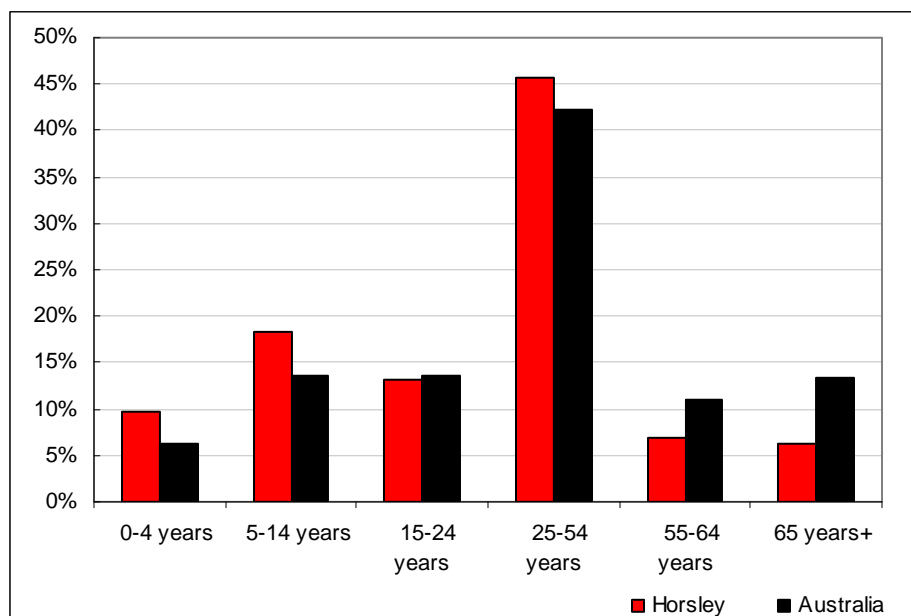


Figure 28 Proportion of population in each age group, Horsley, 2006

Country of birth

In the 2006 Census, 91.2% of persons usually resident in Horsley were Australian citizens, 16.4% were born overseas and 0.1% were overseas visitors.

In the 2006 Census, 79.2% of persons usually resident in Horsley stated they were born in Australia. Other common responses within Horsley were: England 6.1%, Scotland 1.3%, Philippines 0.8%, Former Yugoslav Republic of Macedonia 0.7% and New Zealand 0.7% (Figure 29).

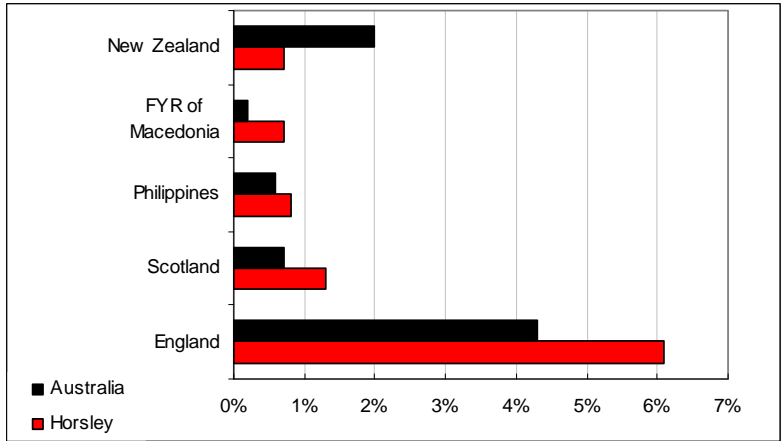


Figure 29 Country of birth, other than Australia, Horsley, 2006

In the 2006 Census, English was stated as the only language spoken at home by 88.1% of persons usually resident in Horsley. The most common languages other than English spoken at home were: Macedonian 1.7%, Italian 1.1%, Spanish 0.9%, Cantonese 0.7% and Serbian 0.5% (Figure 30).

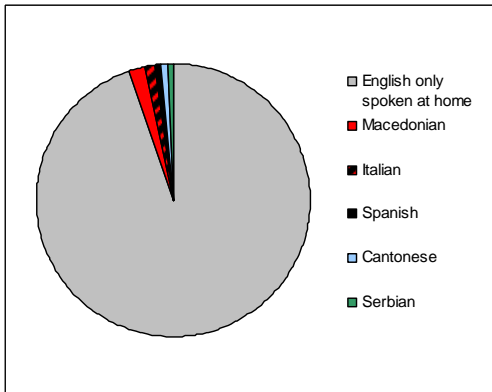


Figure 30 Language spoken at home by most common response, Horsley, 2006

Religion

In the 2006 Census, the most common responses for religious affiliation for persons usually resident in Horsley were Catholic 30.5%, Anglican 27.5%, No Religion 14.2%, Uniting Church 7.4% and Eastern Orthodox 3.6% (Figure 31).

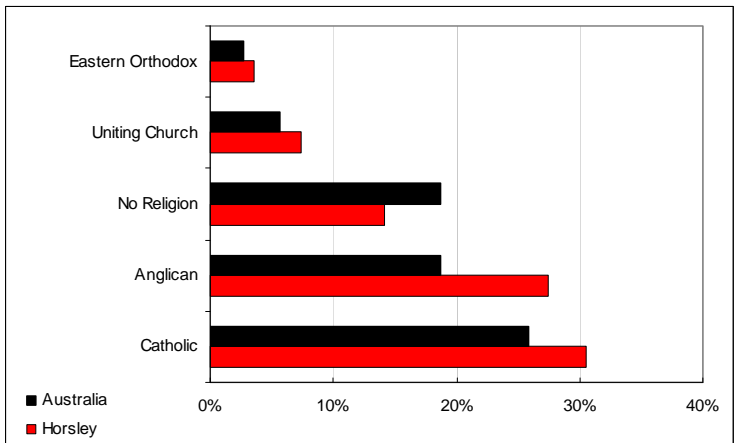


Figure 31 Religions in Horsley, 2006

Marital status

In the 2006 Census, 62.7% of persons aged 15 years and over usually resident in Horsley were married, 26.1% never married, 8.4% separated or divorced and 2.9% widowed (Table 11).

Table 11 Marital status, Horsley, 2006

| | Horsley - N | Horsley - % | Aust - N | Aust - % |
|-----------------------|-------------|-------------|-----------|----------|
| Married | 3,072 | 62.7% | 7,900,684 | 49.6% |
| Never married | 1,279 | 26.1% | 5,278,600 | 33.2% |
| Separated or divorced | 411 | 8.4% | 1,801,979 | 11.3% |
| Widowed | 141 | 2.9% | 936,813 | 5.9% |

Employment and occupation

During the week prior to the 2006 Census, 3,420 people aged 15 years and over who were usually resident in Horsley were in the labour force. Of these, 61.2% were employed full-time, 26.9% were employed part-time, 4.5% were employed but away from work, 2.7% were employed but did not state their hours worked and 4.6% were unemployed. There were 1,310 usual residents aged 15 years and over not in the labour force.

In the 2006 Census, the most common responses for occupation for employed persons usually resident in Horsley were Technicians and Trades Workers 17.5%, Clerical and Administrative Workers 16.7%, Professionals 13.2%, Sales Workers 11.4% and Managers 10.6% (Figure 32).

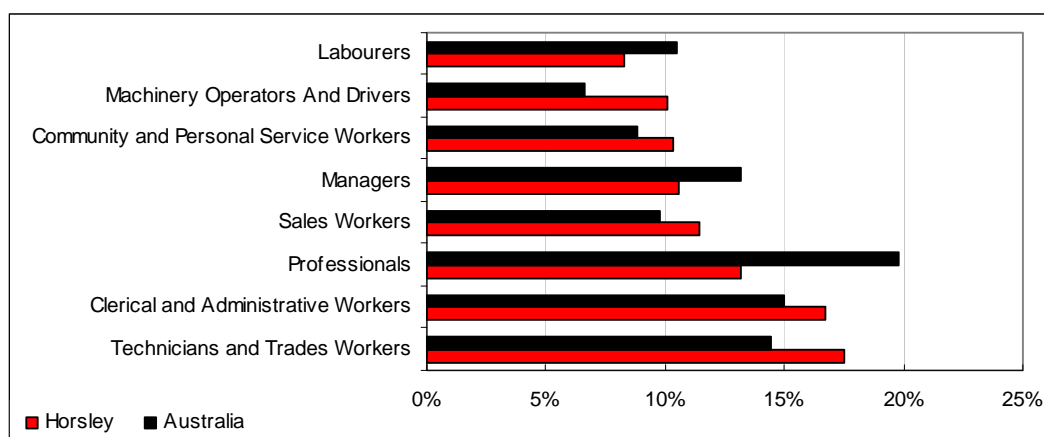


Figure 32 Occupations of people who are employed, Horsley, 2006

In the 2006 Census, the most common industries of employment for persons aged 15 years and over usually resident in Horsley were Basic Ferrous Metal Manufacturing 6.8%, Cafes, Restaurants and Takeaway Food Services 4.1%, Hospitals 3.5%, School Education 3.4% and Public Order and Safety Services 3.1% (Figure 33).

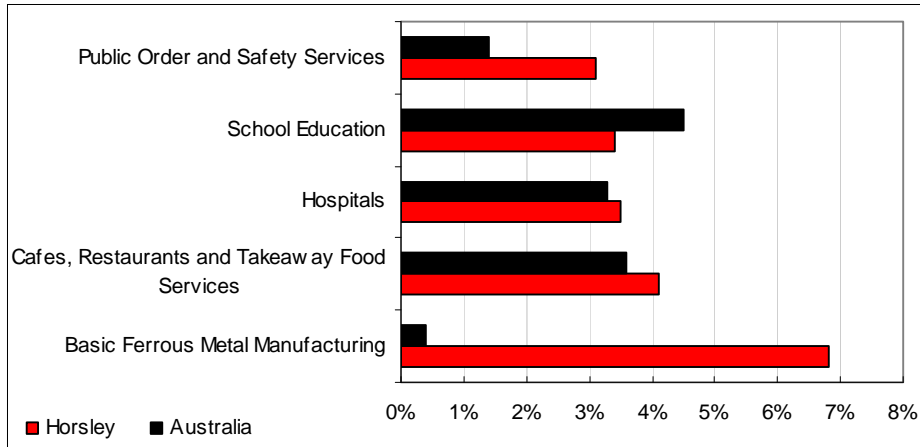


Figure 33 Industries of employment, persons 15 years and older, Horsley, 2006

Education

Interestingly, the majority of people in Horsley graduated from high school in year 10 (Figure 34). However, it seems that younger people are staying at school until year 12, rather than year 10.

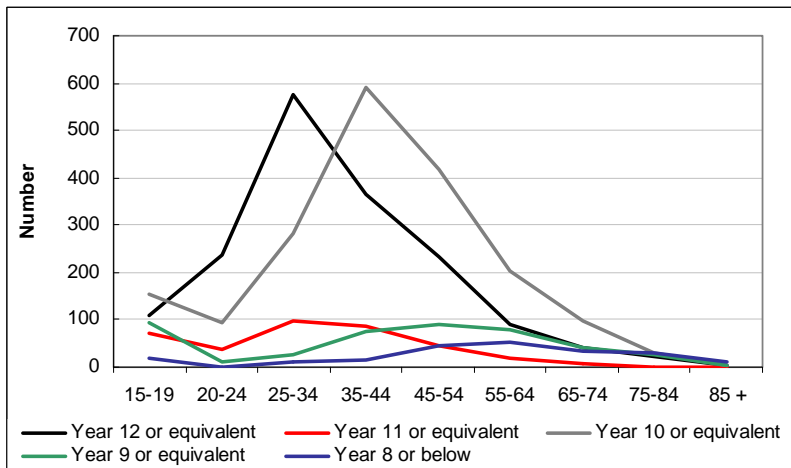


Figure 34 Educational attainment by age group, Horsley 2006

Income

In Horsley, the median weekly individual income for persons aged 15 years and over who were usual residents was \$522, compared with \$466 in Australia. The median weekly household income was \$1,389, compared with \$1,027 in Australia. The median weekly family income was \$1,437, compared with \$1,171 in Australia.

Family and housing

In the 2006 Census, there were 1,892 families in Horsley: 61.7% were couple families with children, 26.0% were couple families without children, 11.6% were one parent families and 0.6% were other families (Table 12).

Table 12 Family characteristics, Horsley, 2006

| | Horsley - N | Horsley - % | Aust - N | Aust - % |
|----------------------------------|-------------|-------------|-----------|----------|
| Total families | 1,892 | - | 5,219,165 | - |
| Couple families with children | 1,168 | 61.7% | 2,362,582 | 45.3% |
| Couple families without children | 492 | 26.0% | 1,943,643 | 37.2% |
| One parent families | 220 | 11.6% | 823,254 | 15.8% |
| Other families | 12 | 0.6% | 89,686 | 1.7% |

In the 2006 Census there were 2,119 occupied private dwellings counted in Horsley : 95.0% were separate houses, 4.5% were semi-detached, row or terrace houses, townhouses etc, 0.4% were flats, units or apartments and 0.2% were other dwellings. In the 2006 Census in Horsley, 87.7% of occupied private dwellings were family households, 8.7% were lone person households and 1.0% were group households.

In Horsley, the median weekly rent was \$250, compared to \$190 in Australia. The median monthly housing loan repayment was \$1,603, compared to \$1,300 in Australia. The average household size was 3.2 and the average number of persons per bedroom was 1.0.

Carers

The number of people in Horsley who undertook unpaid child care in the week prior to 9 August 2006 was 1577 (23%); 827 (25%) males and 750 (22%) females. The greatest proportion of people provided unpaid child care for 40 hours per week (Figure 35).

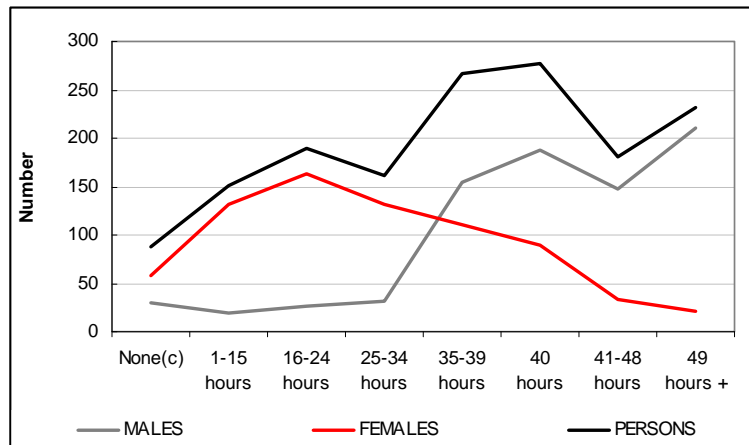


Figure 35 Hours of unpaid child care per week by sex, Horsley, 2006

The total number of people in Horsley who undertook unpaid disability care in the week prior to 9 August 2006 was 556 (8%); 210 males (6%) and 346 females (10%) (Figure 36). The most common carers for disabled people were in the 35-44 year age group.

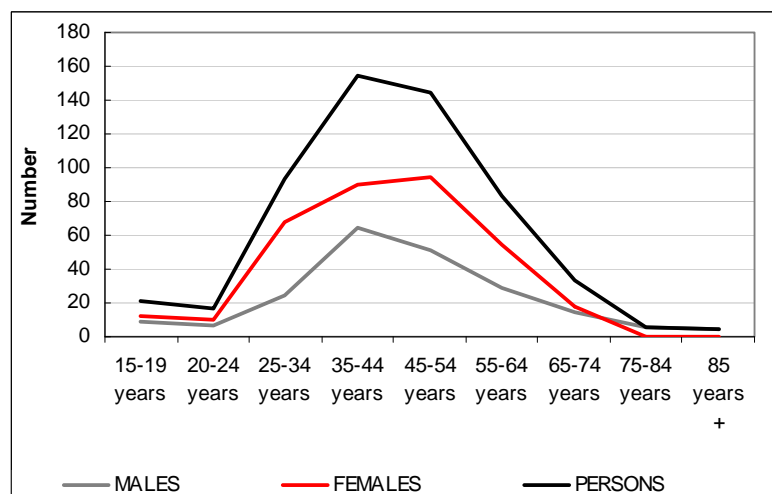


Figure 36 Unpaid disability care per week by sex and age group, Horsley, 2006

3.5 Kanahooka

Population

In the 2006 Census (held on 8th August 2006), there were 4,939 persons usually resident in Kanahooka: 48.1% were males and 51.9% were females. Of the total population in Kanahooka 1.1% were Indigenous persons, compared with 2.3% Indigenous persons in Australia.

Table 13 Population of Kanahooka by sex, 2006

| | Kanahooka - N | Kanahooka - % | Aust - N | Aust - % |
|--------------------|---------------|---------------|------------|----------|
| Total persons* | 4,939 | - | 19,855,288 | - |
| Total males | 2,376 | 48.1% | 9,799,252 | 49.4% |
| Total females | 2,563 | 51.9% | 10,056,036 | 50.6% |
| Indigenous persons | 56 | 1.1% | 455,031 | 2.3% |

N = number of persons in region * = excluding overseas visitors % = per cent of persons in region

In the 2006 Census 16.5% of the population usually resident in Kanahooka were children aged between 0-14 years, and 37.8% were persons aged 55 years and over. The median age of persons in Kanahooka was 45 years, compared with 37 years for persons in Australia.

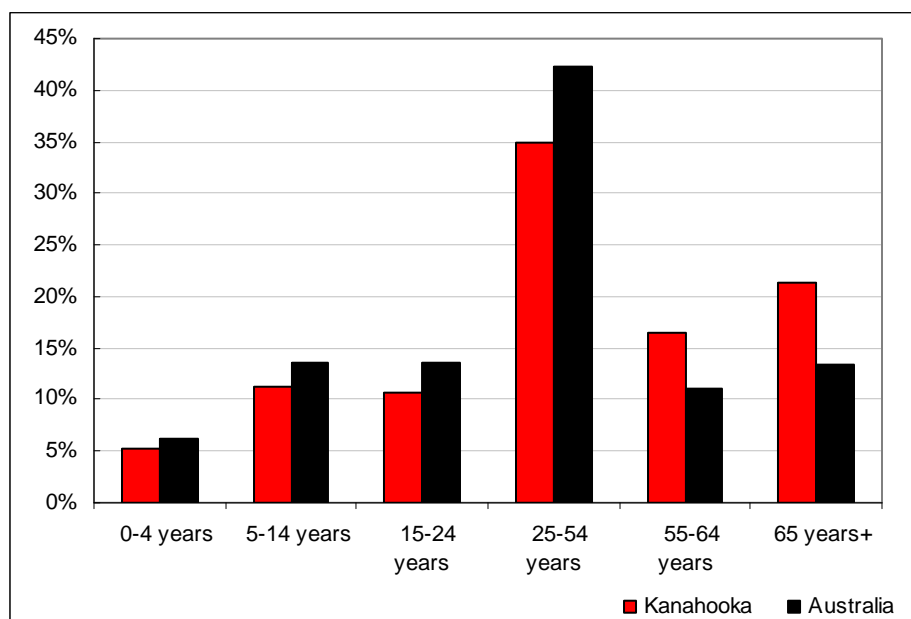


Figure 37 Proportion of Kanahooka residents by age group, 2006

Country of birth

In the 2006 Census, 91.1% of persons usually resident in Kanahooka were Australian citizens, 21.4% were born overseas and 0.2% were overseas visitors.

In the 2006 Census, 74.5% of persons usually resident in Kanahooka stated they were born in Australia. Other common responses within Kanahooka were: England 9.5%, Scotland 1.9%, Germany 1.4%, Italy 1.2% and Netherlands 0.7%.

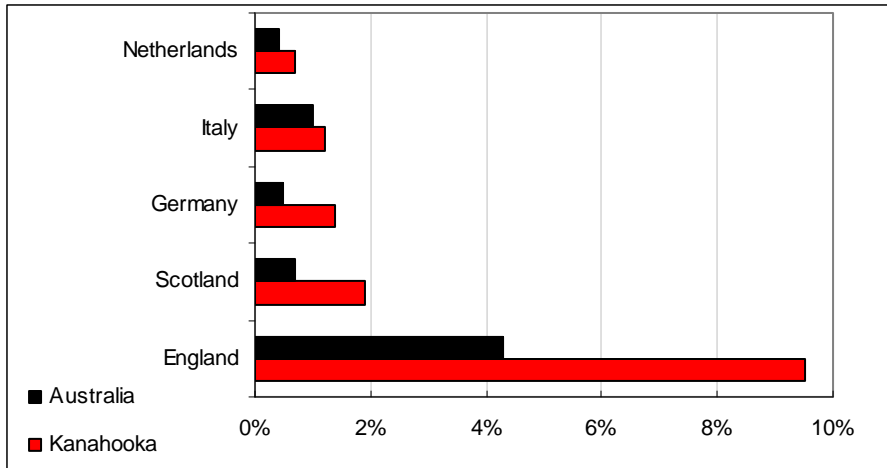


Figure 38 Country of birth, other than Australia, Kanahooka, 2006

In the 2006 Census, English was stated as the only language spoken at home by 89.1% of persons usually resident in Kanahooka. The most common languages other than English spoken at home were: Italian 1.1%, German 1.0%, Macedonian 1.0%, Greek 0.9% and Spanish 0.7%.

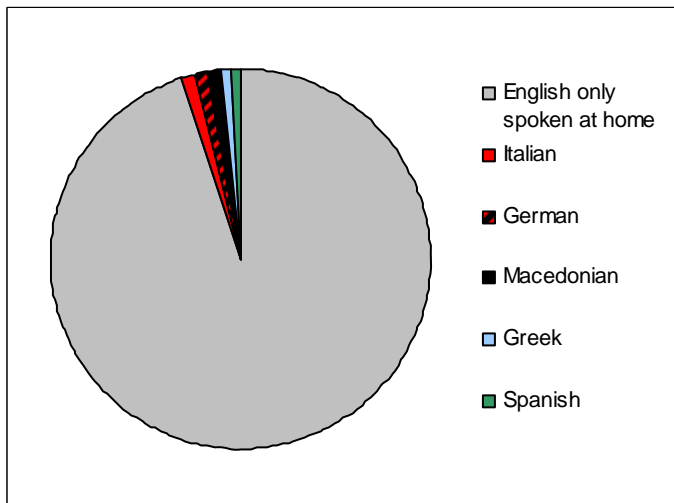


Figure 39 Language spoken at home by most common responses, Kanahooka, 2006

Religion

In the 2006 Census, the most common responses for religious affiliation for persons usually resident in Kanahooka were Anglican 31.4%, Catholic 27.4%, No Religion 11.2%, Uniting Church 7.0% and Presbyterian and Reformed 5.1%.

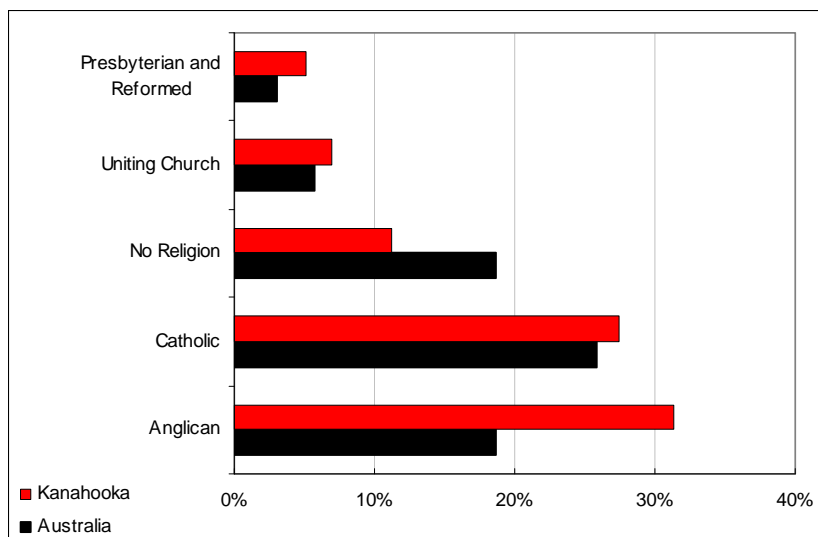


Figure 40 Religions in Kanahooka, 2006

Marital Status

In the 2006 Census, 59.1% of persons aged 15 years and over usually resident in Kanahooka were married, 22.2% never married, 9.3% separated or divorced and 9.4% widowed.

Table 14 Marital status, Kanahooka, 2006

| | Kanahooka - N | Kanahooka - % | Aust - N | Aust - % |
|-----------------------|---------------|---------------|-----------|----------|
| Married | 2,439 | 59.1% | 7,900,684 | 49.6% |
| Never married | 917 | 22.2% | 5,278,600 | 33.2% |
| Separated or divorced | 382 | 9.3% | 1,801,979 | 11.3% |
| Widowed | 387 | 9.4% | 936,813 | 5.9% |

Employment and occupation

During the week prior to the 2006 Census, 2,185 people aged 15 years and over who were usually resident in Kanahooka were in the labour force. Of these, 58.5% were employed full-time, 29.5% were employed part-time, 3.5% were employed but away from work, 2.8% were employed but did not state their hours worked and 5.7% were unemployed. There were 1,784 usual residents aged 15 years and over not in the labour force.

In the 2006 Census, the most common responses for occupation for employed persons usually resident in Kanahooka were Technicians and Trades Workers 17.9%, Professionals 16.0%, Clerical and Administrative Workers 15.4%, Sales Workers 10.6% and Community and Personal Service Workers 10.0%.

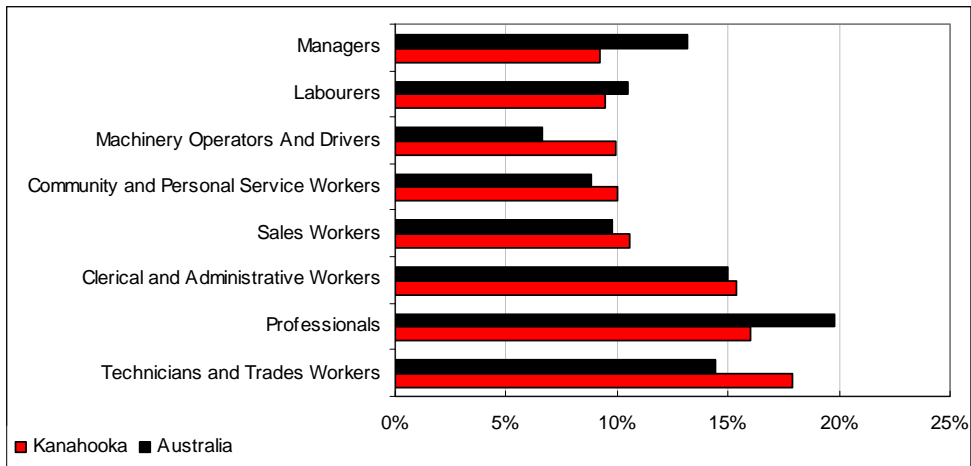


Figure 41 Occupation of people who are employed, Kanahooka, 2006

In the 2006 Census, the most common industries of employment for persons aged 15 years and over usually resident in Kanahooka were Basic Ferrous Metal Manufacturing 6.3%, School Education 5.0%, Hospitals 3.8%, Cafes, Restaurants and Takeaway Food Services 3.4% and Tertiary Education 2.8%.

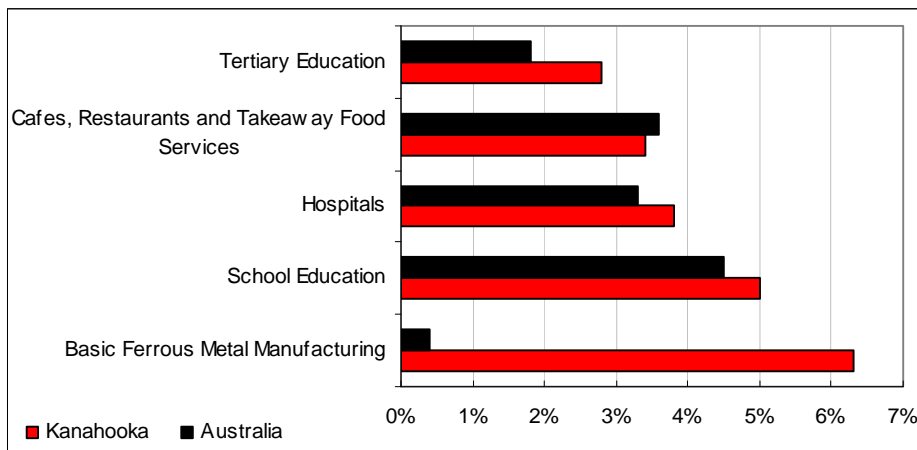


Figure 42 Industries of employment, persons 15 years and older, Kanahooka, 2006

Education

The majority of people in Farmborough graduated from high school in year 12 (Figure 7). However, it seems that older people graduated from high school in year 11 or lower. In fact, in the 75-84 and 85+ age groups, graduating from high school in year 8 or below was the most common response.

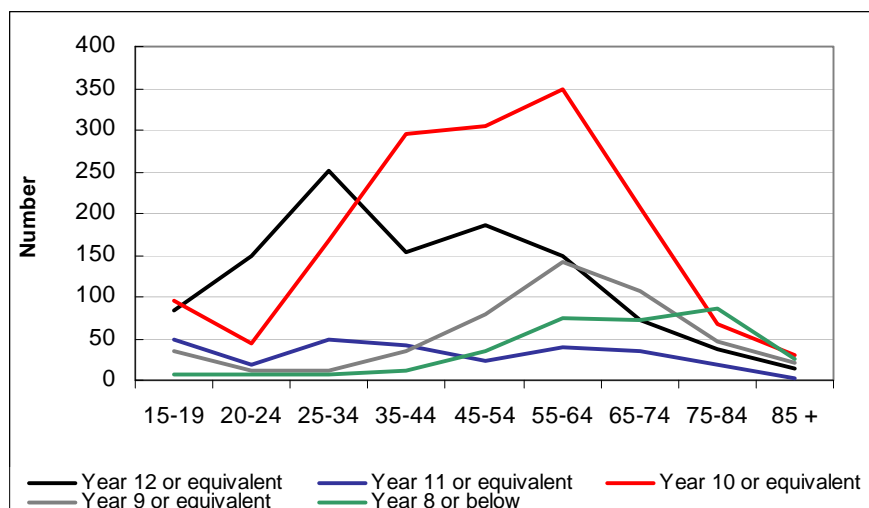


Figure 43 Educational attainment by age group, Farmborough, 2006

Income

In Kanahooka, the median weekly individual income for persons aged 15 years and over who were usual residents was \$375, compared with \$466 in Australia. The median weekly household income was \$936, compared with \$1,027 in Australia. The median weekly family income was \$1,101, compared with \$1,171 in Australia.

Family and housing

In the 2006 Census, there were 1,442 families in Kanahooka: 42.2% were couple families with children, 45.3% were couple families without children, 11.8% were one parent families and 0.8% were other families.

Table 15 Family characteristics, Kanahooka, 2006

| | Kanahooka - N | Kanahooka - % | Aust - N | Aust - % |
|----------------------------------|---------------|---------------|-----------|----------|
| Total families | 1,442 | - | 5,219,165 | - |
| Couple families with children | 608 | 42.2% | 2,362,582 | 45.3% |
| Couple families without children | 653 | 45.3% | 1,943,643 | 37.2% |
| One parent families | 170 | 11.8% | 823,254 | 15.8% |
| Other families | 11 | 0.8% | 89,686 | 1.7% |

In the 2006 Census there were 1,852 occupied private dwellings counted in Kanahooka : 90.8% were separate houses, 6.3% were semi-detached, row or terrace houses, townhouses etc, 2.9% were flats, units or apartments and 0.0% were other dwellings.

In Kanahooka, the median weekly rent was \$215, compared to \$190 in Australia. The median monthly housing loan repayment was \$1,365, compared to \$1,300 in Australia. The average household size was 2.6 and the average number of persons per bedroom was 1.0.

In the 2006 Census in Kanahooka, 76.5% of occupied private dwellings were family households, 20.6% were lone person households and 0.9% were group households.

In Kanahooka, of the occupied private dwellings being rented, 56.1% were rented from a real estate agent, 2.7% were rented from a State or Territory housing authority and 38.0% were rented from other landlord type. In comparison, in Australia 50.5%

were rented from a real estate agent and 14.9% from a state or territory housing authority.

Carers

The number of people in Kanahooka who undertook unpaid child care in the week prior to 9 August 2006 was 704 (14%); 369 (16%) males and 335 (13%) females. The greatest proportion of people provided unpaid child care for 35-39 hours per week (Figure 8).

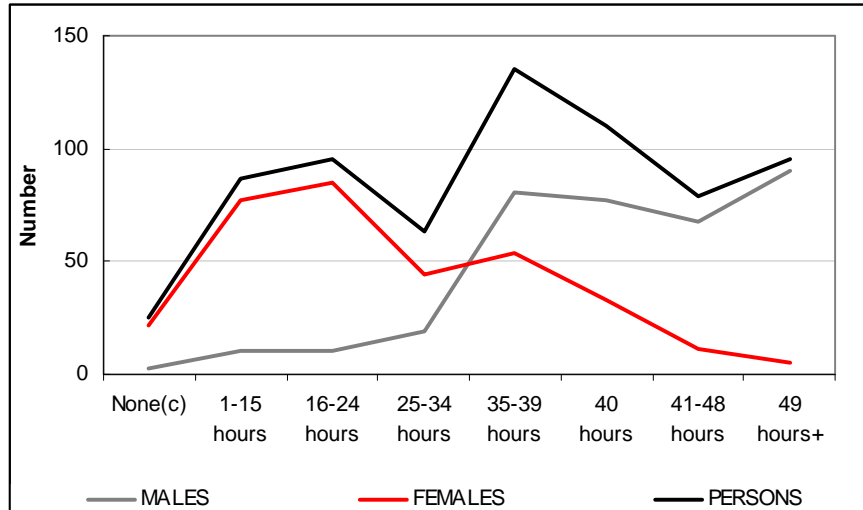


Figure 44 Hours of unpaid child care per week by sex, Kanahooka, 2006

The total number of people in Kanahooka who undertook unpaid disability care in the week prior to 9 August 2006 was 522 (11%); 202 males (9%) and 320 females (12%) (Figure 9). The most common carers for disabled people were in the 55-64 year age group.

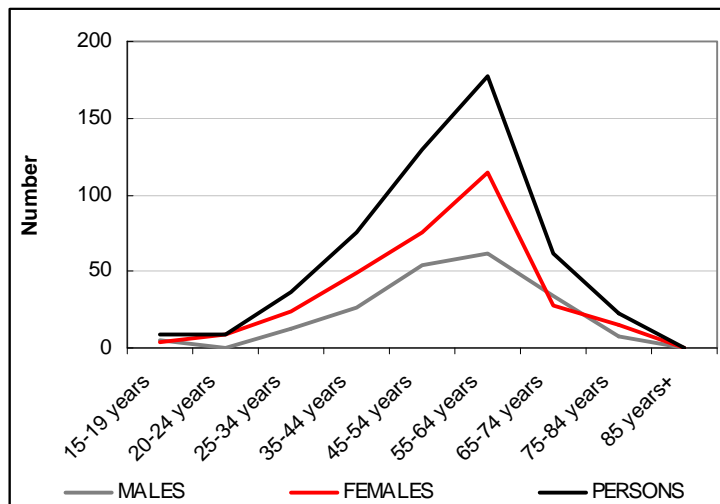


Figure 45 Unpaid disability care per week by sex and age group, Kanahooka, 2006

3.6 Koonawarra

Population

In the 2006 Census there were 3,630 persons usually resident in Koonawarra: 49.3% were males and 50.7% were females. Of the total population in Koonawarra 5.8% were Indigenous persons, compared with 2.3% Indigenous persons in Australia.

Table 16 Population of Koonawarra by sex, 2006

| | Koonawarra - N | Koonawarra - % | Aust - N | Aust - % |
|--------------------|----------------|----------------|------------|----------|
| Total persons* | 3,630 | - | 19,855,288 | - |
| Total males | 1,788 | 49.3% | 9,799,252 | 49.4% |
| Total females | 1,842 | 50.7% | 10,056,036 | 50.6% |
| Indigenous persons | 211 | 5.8% | 455,031 | 2.3% |

N = number of persons in region * = excluding overseas visitors % = per cent of persons in region

In the 2006 Census 25.0% of the population usually resident in Koonawarra were children aged between 0-14 years, and 22.9% were persons aged 55 years and over. The median age of persons in Koonawarra was 34 years, compared with 37 years for persons in Australia.

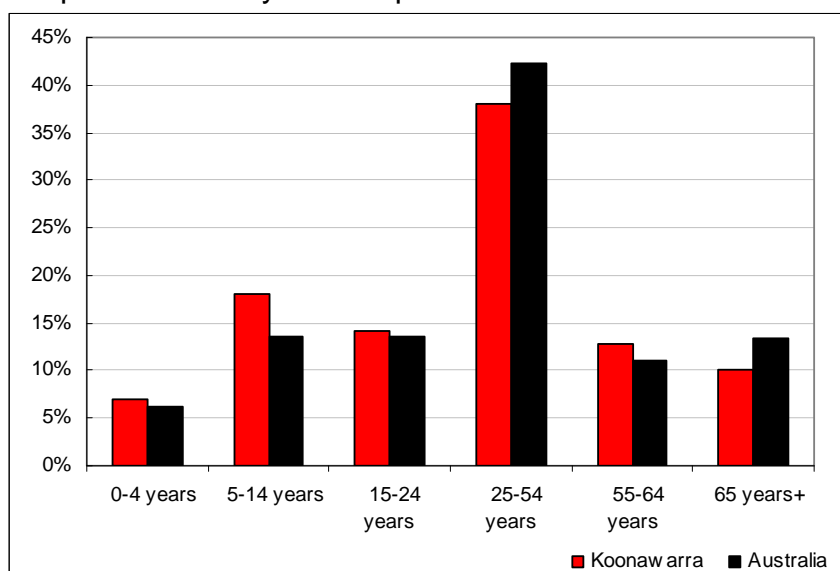


Figure 46 Proportion of population by age group, Koonawarra, 2006

Country of birth

In the 2006 Census, 88.4% of persons usually resident in Koonawarra were Australian citizens, 19.6% were born overseas and 0.1% were overseas visitors.

In the 2006 Census, 75.4% of persons usually resident in Koonawarra stated they were born in Australia. Other common responses within Koonawarra were: England 8.7%, Scotland 2.0%, Germany 0.9%, New Zealand 0.8% and Chile 0.6%.

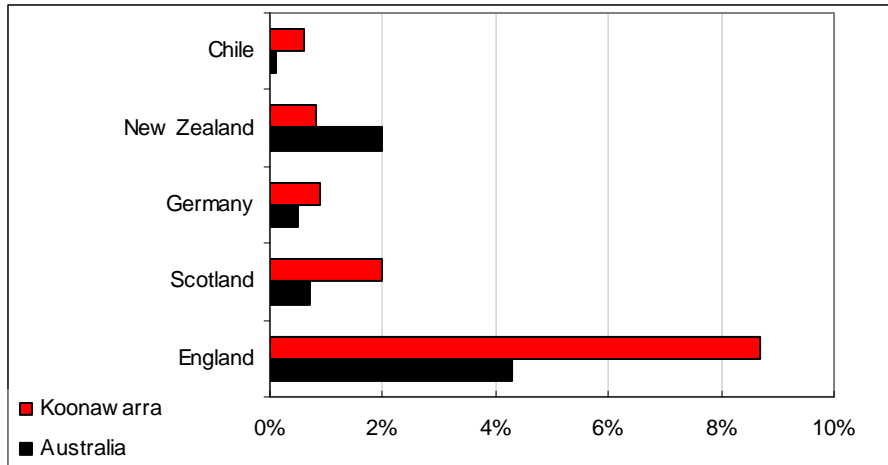


Figure 47 Country of birth, other than Australia, Koonawarra, 2006

In the 2006 Census, English was stated as the only language spoken at home by 91.1% of persons usually resident in Koonawarra. The most common languages other than English spoken at home were: Spanish 1.7%, Macedonian 0.8%, German 0.5%, Vietnamese 0.4% and Italian 0.2%.

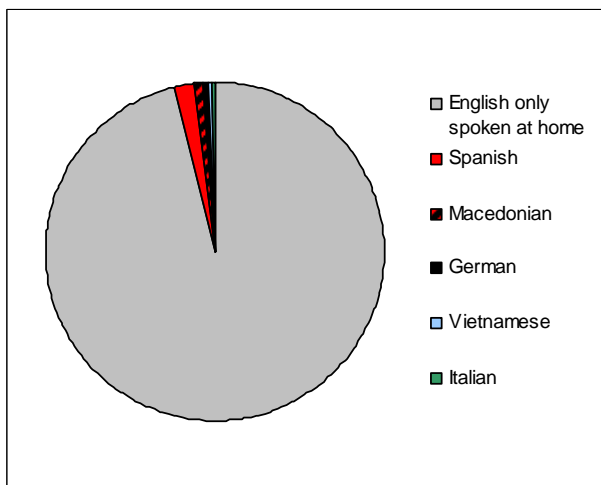


Figure 48 Language spoken at home by most common response, Koonawarra, 2006

Religion

In the 2006 Census, the most common responses for religious affiliation for persons usually resident in Koonawarra were Anglican 32.7%, Catholic 26.1%, No Religion 17.1%, Presbyterian and Reformed 3.8% and Uniting Church 3.7%.

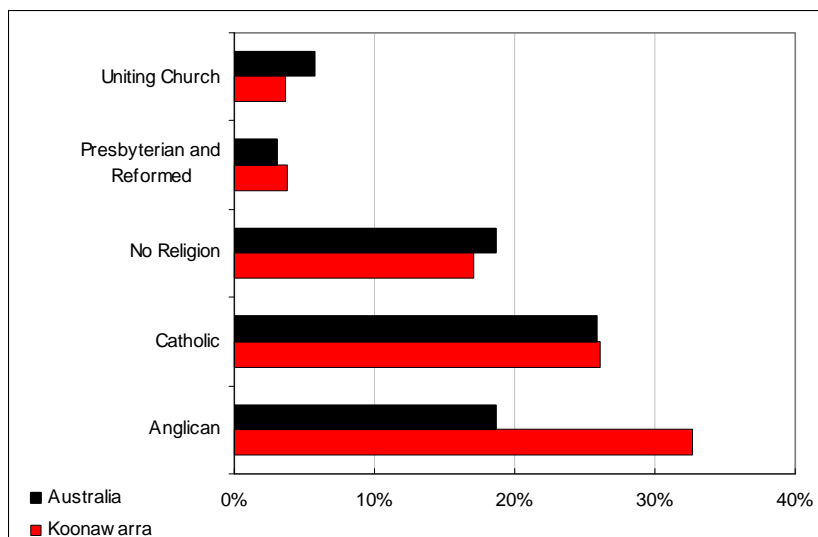


Figure 49 Religions in Koonawarra, 2006

Marital status

In the 2006 Census, 47.6% of persons aged 15 years and over usually resident in Koonawarra were married, 34.5% never married, 12.9% separated or divorced and 4.9% widowed.

Table 17 Marital status, Koonawarra, 2006

| | Koonawarra - N | Koonawarra - % | Aust - N | Aust - % |
|-----------------------|----------------|----------------|-----------|----------|
| Married | 1,296 | 47.6% | 7,900,684 | 49.6% |
| Never married | 939 | 34.5% | 5,278,600 | 33.2% |
| Separated or divorced | 352 | 12.9% | 1,801,979 | 11.3% |
| Widowed | 133 | 4.9% | 936,813 | 5.9% |

Employment and occupation

During the week prior to the 2006 Census, 1,415 people aged 15 years and over who were usually resident in Koonawarra were in the labour force. Of these, 50.3% were employed full-time, 28.4% were employed part-time, 4.0% were employed but away from work, 4.1% were employed but did not state their hours worked and 13.2% were unemployed. There were 1,202 usual residents aged 15 years and over not in the labour force.

In the 2006 Census, the most common responses for occupation for employed persons usually resident in Koonawarra were Labourers 19.1%, Technicians and Trades Workers 18.3%, Machinery Operators And Drivers 13.2%, Community and Personal Service Workers 12.4% and Clerical and Administrative Workers 11.9%.

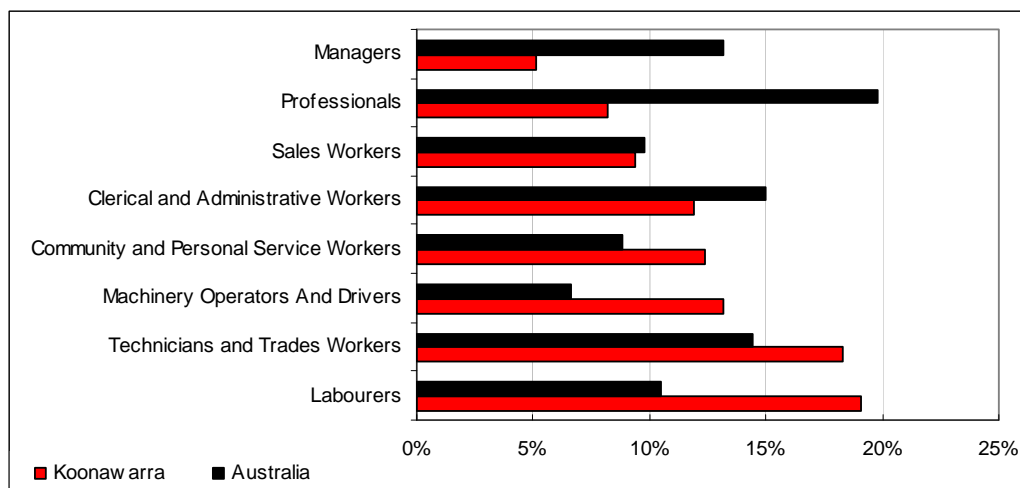


Figure 50 Occupation of people who are employed, Koonawarra, 2006

In the 2006 Census, the most common industries of employment for persons aged 15 years and over usually resident in Koonawarra were Basic Ferrous Metal Manufacturing 5.9%, Residential Care Services 3.7%, Supermarket and Grocery Stores 3.5%, Road Freight Transport 3.3% and Cafes, Restaurants and Takeaway Food Services 3.2%.

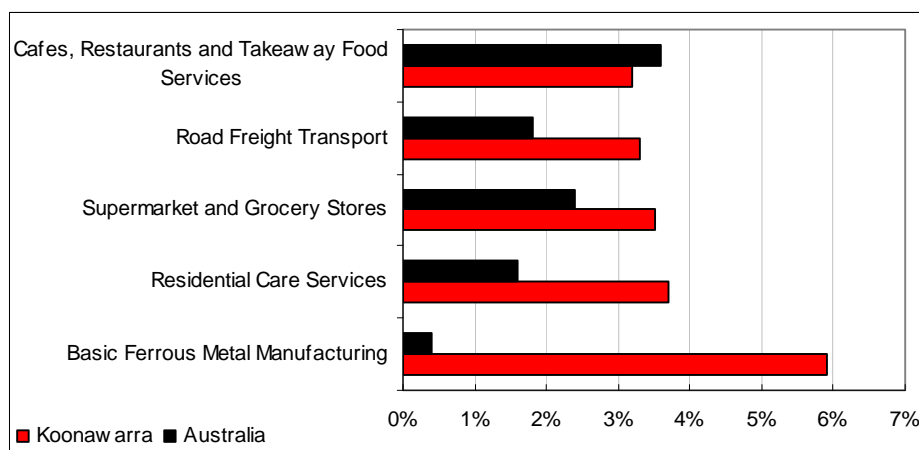


Figure 51 Industries of employment, persons 15 years and older, Koonawarra residents, 2006

Education

The majority of people in Koonawarra graduated from high school in year 10 (Figure 7). However young people in the 20-24 year age group seem to be leaving school more frequently at year 12, rather than year 10. Interesting, this trend is not true for young people aged 15-19 years.

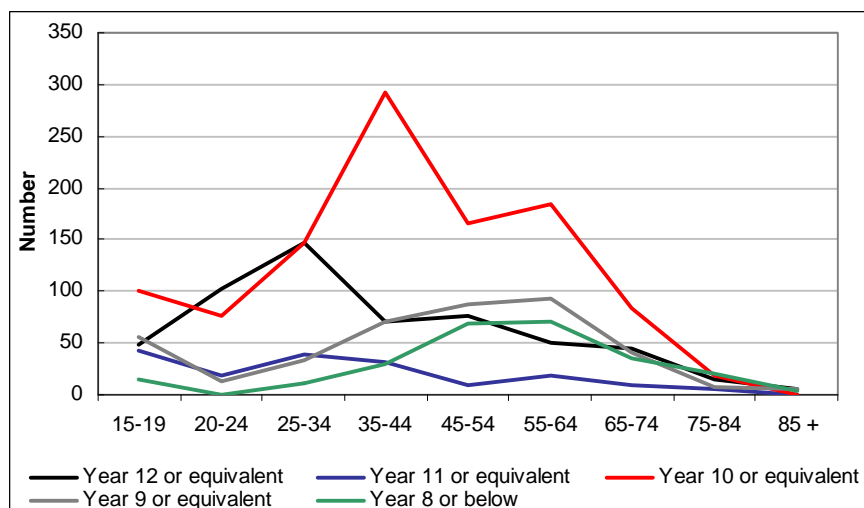


Figure 52 Educational attainment by age group, Koonawarra, 2006

Income

In Koonawarra, the median weekly individual income for persons aged 15 years and over who were usual residents was \$312, compared with \$466 in Australia. The median weekly household income was \$710, compared with \$1,027 in Australia. The median weekly family income was \$775, compared with \$1,171 in Australia.

Family and housing

In the 2006 Census, there were 1,057 families in Koonawarra: 38.8% were couple families with children, 32.3% were couple families without children, 27.9% were one parent families and 1.0% were other families.

Table 18 Family characteristics, Koonawarra, 2006

| | Koonawarra - N | Koonawarra - % | Aust - N | Aust - % |
|----------------------------------|----------------|----------------|-----------|----------|
| Total families | 1,057 | - | 5,219,165 | - |
| Couple families with children | 410 | 38.8% | 2,362,582 | 45.3% |
| Couple families without children | 341 | 32.3% | 1,943,643 | 37.2% |
| One parent families | 295 | 27.9% | 823,254 | 15.8% |
| Other families | 11 | 1.0% | 89,686 | 1.7% |

In the 2006 Census there were 1,270 occupied private dwellings counted in Koonawarra : 94.4% were separate houses, 3.1% were semi-detached, row or terrace houses, townhouses etc, 2.2% were flats, units or apartments and 0.0% were other dwellings.

In Koonawarra, the median weekly rent was \$136, compared to \$190 in Australia. The median monthly housing loan repayment was \$1,213, compared to \$1,300 in Australia. The average household size was 2.8 and the average number of persons per bedroom was 1.1.

Carers

The number of people in Koonawarra who undertook unpaid child care in the week prior to 9 August 2006 was 475 (13%); 237 (13%) males and 238 (13%) females. The greatest proportion of people provided unpaid child care for 16-24 and 35-39 hours per week (Figure 8).

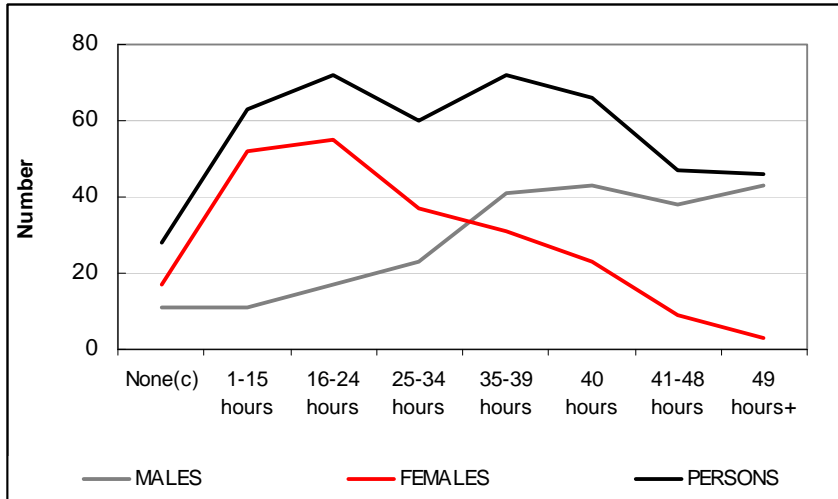


Figure 53 Hours of unpaid child care per week by sex Koonawarra, 2006

The total number of people in Koonawarra who undertook unpaid disability care in the week prior to 9 August 2006 was 392 (11%); 145 males (8%) and 247 females (13%) (Figure 9). The most common carers for disabled people were in the 35-44 year age group.

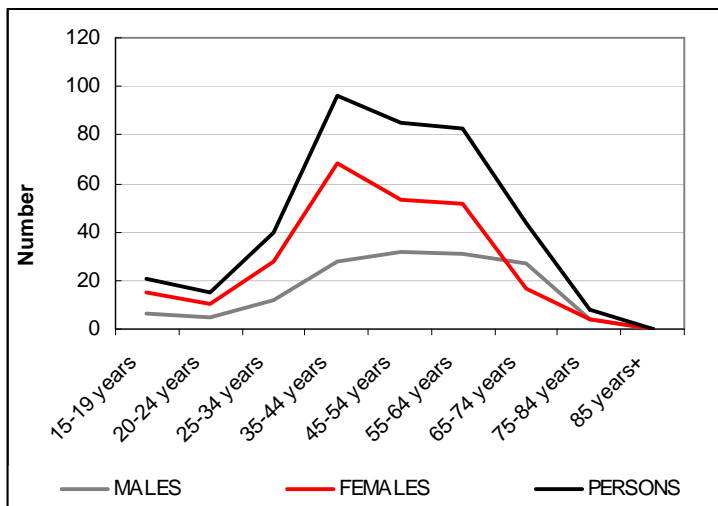


Figure 54 Unpaid disability care per week by sex and age group, Koonawarra, 2006

3.7 Unanderra

Population

In the 2006 Census, there were 5,886 persons usually resident in Unanderra: 46.8% were males and 53.2% were females (Table 1). Of the total population in Unanderra 2.4% were Indigenous persons, compared with 2.3% Indigenous persons in Australia.

Table 19 Population in Unanderra by sex, 2006

| | Unanderra - N | Unanderra - % | Aust - N | Aust - % |
|--------------------|---------------|---------------|------------|----------|
| Total persons* | 5,886 | - | 19,855,288 | - |
| Total males | 2,757 | 46.8% | 9,799,252 | 49.4% |
| Total females | 3,129 | 53.2% | 10,056,036 | 50.6% |
| Indigenous persons | 142 | 2.4% | 455,031 | 2.3% |

N = number of persons in region * = excluding overseas visitors % = per cent of persons in region

In the 2006 Census 19.4% of the population usually resident in Unanderra were children aged between 0-14 years, and 31.0% were persons aged 55 years and over (Figure 1). The median age of persons in Unanderra was 40 years, compared with 37 years for persons in Australia.

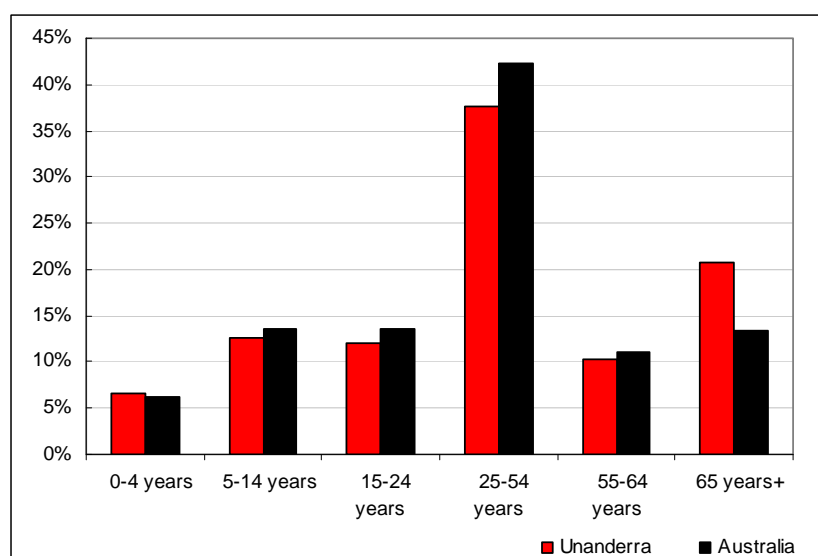


Figure 55 Proportion of population by age group, Unanderra, 2006

Country of birth

In the 2006 Census, 87.0% of persons usually resident in Unanderra were Australian citizens, 20.1% were born overseas and 0.2% were overseas visitors (compared with 1% Australian average).

In the 2006 Census, 72.3% of persons usually resident in Unanderra stated they were born in Australia (Figure 2). Other common responses within Unanderra were: England 4.5%, Italy 1.8%, Croatia 1.6%, Former Yugoslav Republic of Macedonia 1.2% and Scotland 1.2%.

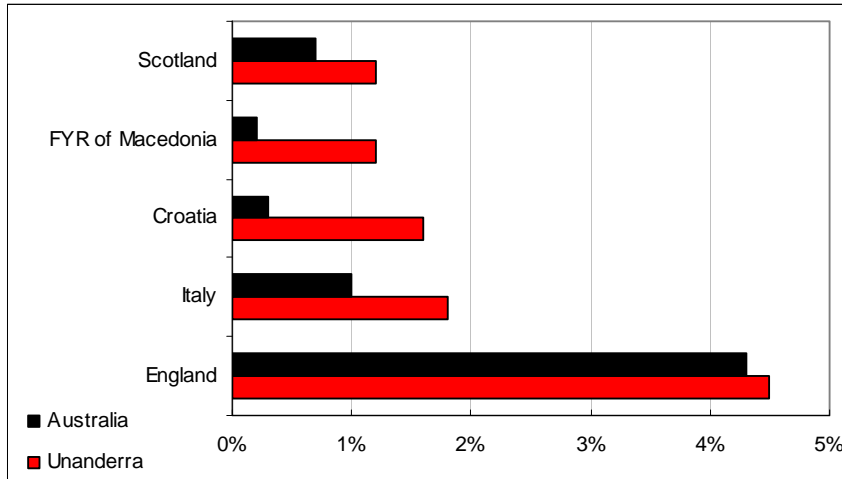


Figure 56 Country of birth, other than Australia, Unanderra, 2006

In the 2006 Census, English was stated as the only language spoken at home by 77.7% of persons usually resident in Unanderra (Figure 3). The most common languages other than English spoken at home were: Croatian 2.3%, Italian 2.3%, Macedonian 1.8%, Arabic 1.2% and Serbian 1.1%.

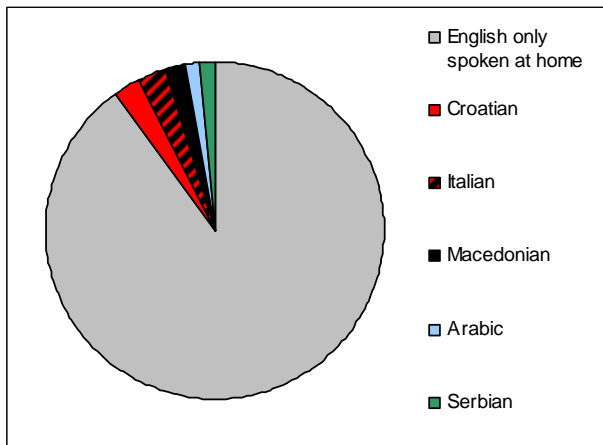


Figure 57 Language spoken at home by most common response, Unanderra, 2006

Religion

In the 2006 Census, the most common responses for religious affiliation for persons usually resident in Unanderra were Catholic 28.9%, Anglican 23.3%, No Religion 12.7%, Eastern Orthodox 5.5% and Uniting Church 5.2% (Figure 4).

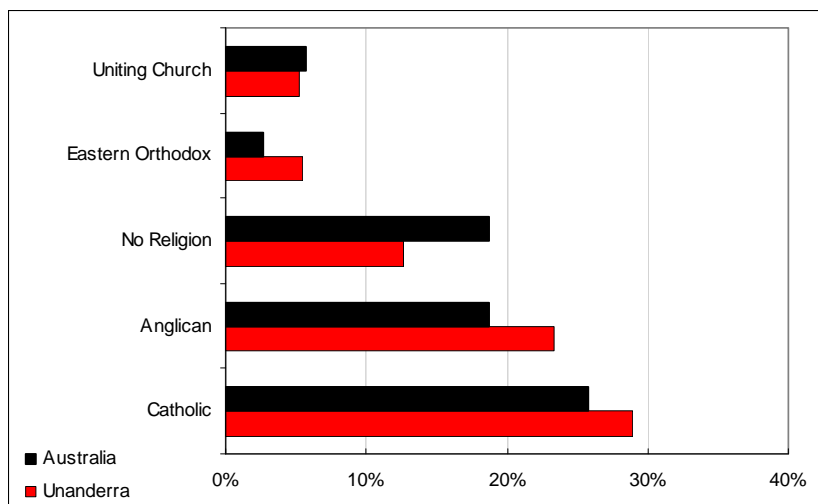


Figure 58 Religions in Unanderra, 2006

Marital status

In the 2006 Census, 47.1% of persons aged 15 years and over usually resident in Unanderra were married, 29.3% never married, 11.5% separated or divorced and 12.2% widowed.

Table 20 Marital status, Unanderra, 2006

| | Unanderra - N | Unanderra - % | Aust - N | Aust - % |
|-----------------------|---------------|---------------|-----------|----------|
| Married | 2,233 | 47.1% | 7,900,684 | 49.6% |
| Never married | 1,391 | 29.3% | 5,278,600 | 33.2% |
| Separated or divorced | 546 | 11.5% | 1,801,979 | 11.3% |
| Widowed | 577 | 12.2% | 936,813 | 5.9% |

Employment and occupation

During the week prior to the 2006 Census, 2,184 people aged 15 years and over who were usually resident in Unanderra were in the labour force. Of these, 56.3% were employed full-time, 28.1% were employed part-time, 3.5% were employed but away from work, 2.5% were employed but did not state their hours worked and 9.6% were unemployed. There were 2,159 usual residents aged 15 years and over not in the labour force.

In the 2006 Census, the most common responses for occupation for employed persons usually resident in Unanderra were Technicians and Trades Workers 18.6%, Labourers 14.6%, Clerical and Administrative Workers 14.5%, Professionals 14.0% and Sales Workers 9.6%.

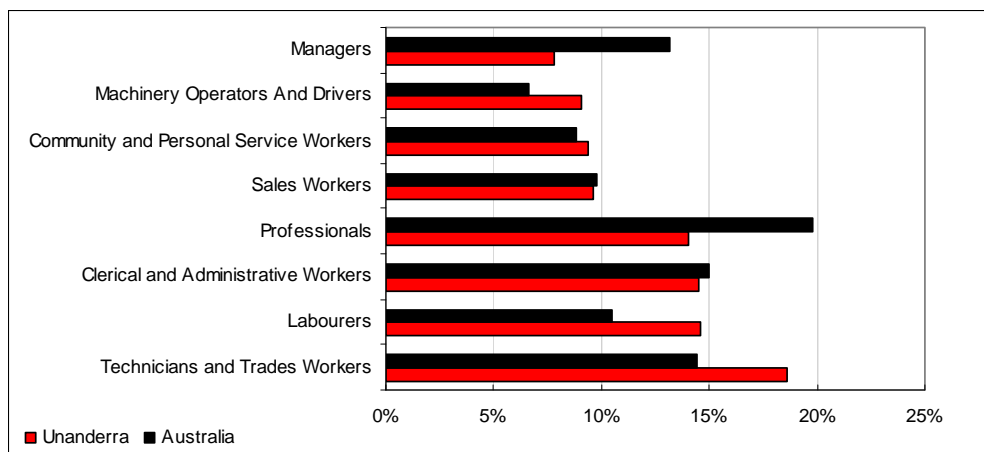


Figure 59 Occupation of employed persons, Unanderra, 2006

In the 2006 Census, the most common industries of employment for persons aged 15 years and over usually resident in Unanderra were Basic Ferrous Metal Manufacturing 6.8%, School Education 4.2%, Cafes, Restaurants and Takeaway Food Services 4.2%, Hospitals 3.4% and Residential Care Services 3.3%.

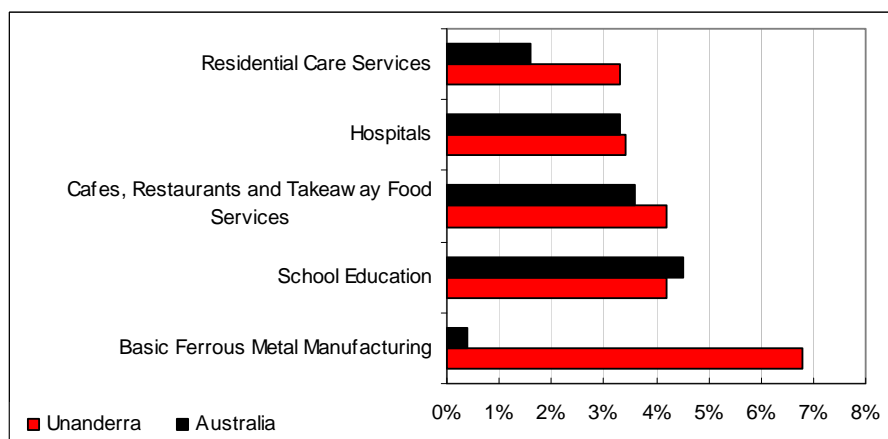


Figure 60 Industry of employment, Koonawarra residents, 2006

Education

The majority of people in Unanderra graduated from high school in year 12 (Figure 7). However there are a large proportion of

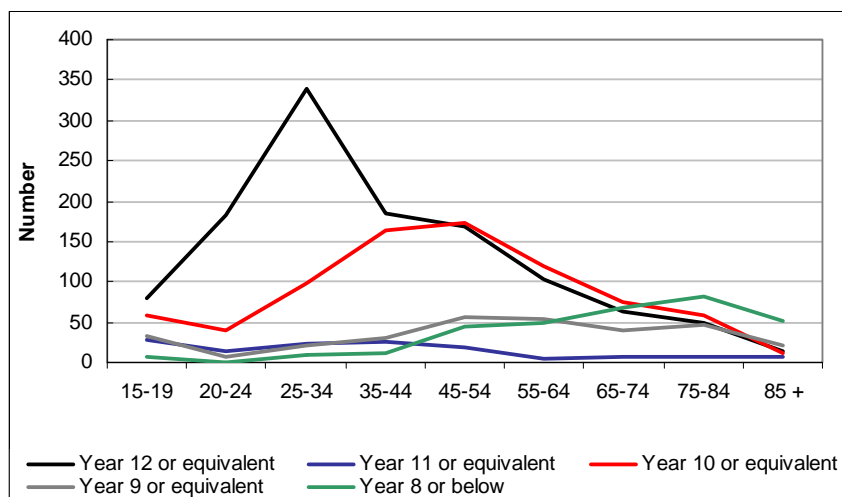


Figure 61 Educational attainment by age group, Unanderra, 2006

Income

In Unanderra, the median weekly individual income for persons aged 15 years and over who were usual residents was \$326, compared with \$466 in Australia. The median weekly household income was \$637, compared with \$1,027 in Australia. The median weekly family income was \$918, compared with \$1,171 in Australia.

Family and housing

In the 2006 Census, there were 1,538 families in Unanderra: 40.4% were couple families with children, 35.2% were couple families without children, 22.5% were one parent families and 1.8% were other families.

Table 21 Family characteristics, Unanderra, 2006

| | Unanderra - N | Unanderra - % | Aust - N | Aust - % |
|----------------------------------|---------------|---------------|-----------|----------|
| Total families | 1,538 | - | 5,219,165 | - |
| Couple families with children | 622 | 40.4% | 2,362,582 | 45.3% |
| Couple families without children | 542 | 35.2% | 1,943,643 | 37.2% |
| One parent families | 346 | 22.5% | 823,254 | 15.8% |
| Other families | 28 | 1.8% | 89,686 | 1.7% |

In the 2006 Census there were 2,251 occupied private dwellings counted in Unanderra : 82.3% were separate houses, 9.4% were semi-detached, row or terrace houses, townhouses etc, 7.5% were flats, units or apartments and 0.6% were other dwellings.

In Unanderra, the median weekly rent was \$129, compared to \$190 in Australia. The median monthly housing loan repayment was \$1,358, compared to \$1,300 in Australia. The average household size was 2.5 and the average number of persons per bedroom was 1.1.

In Unanderra, 29.6% of occupied private dwellings were fully owned, 24.3% were being purchased and 35.7% were rented.

In the 2006 Census in Unanderra, 67.2% of occupied private dwellings were family households, 26.7% were lone person households and 1.6% were group households.

Carers

The number of people in Unanderra who undertook unpaid child care in the week prior to 9 August 2006 was 763 (13%); 383 (14%) males and 380 (12%) females.

The greatest proportion of people provided unpaid child care for 35-39 hours per week (Figure 8).

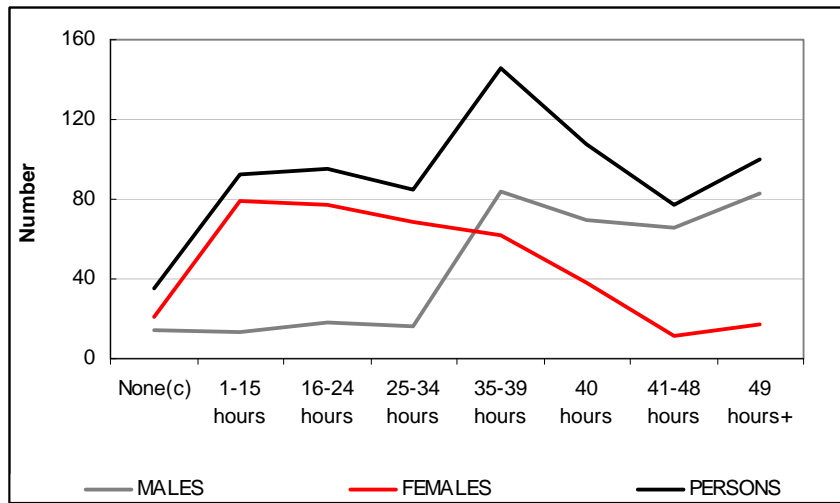


Figure 62 Hours of unpaid child care per week by sex, Unanderra, 2006

The total number of people in Unanderra who undertook unpaid disability care in the week prior to 9 August 2006 was 544 (9%); 204 males (7%) and 340 females (11%) (Figure 9). The most common carers for disabled people were in the 45-54 year age group.

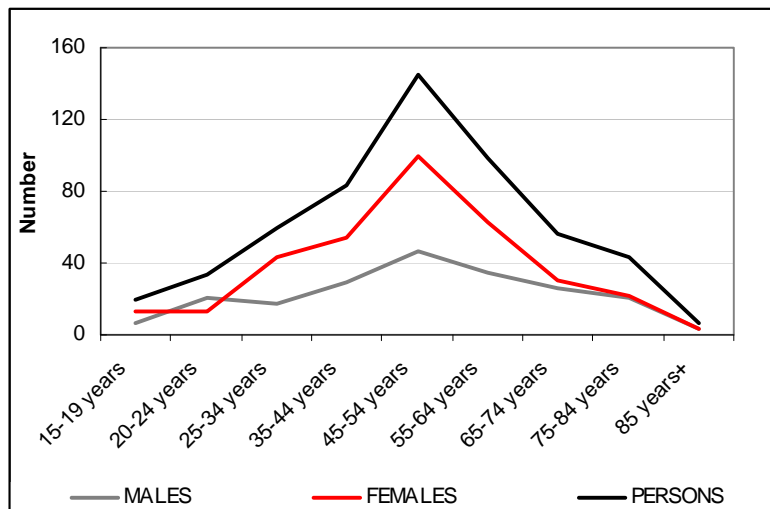


Figure 63 Unpaid disability care per week by sex and age group, Unanderra, 2006

4. Socioeconomic status

Socioeconomic status is measured in a variety of ways, but most commonly using the Socio Economic Index For Areas (SEIFA) from the ABS. SEIFA has four different measures, each measuring different aspects of socioeconomic status for a specified geographic area. Most useful is the Index of Relative Socioeconomic Disadvantage (IRSD), as it focuses on disadvantage (thus easier to quantify), and is derived from Census variables such as: low income, low educational attainment, unemployment, and dwellings without motor vehicles. The lower the score, the more disadvantaged the area. It must be emphasised that this aggregated score for a geographic area; it does not necessarily represent individuals within the area.

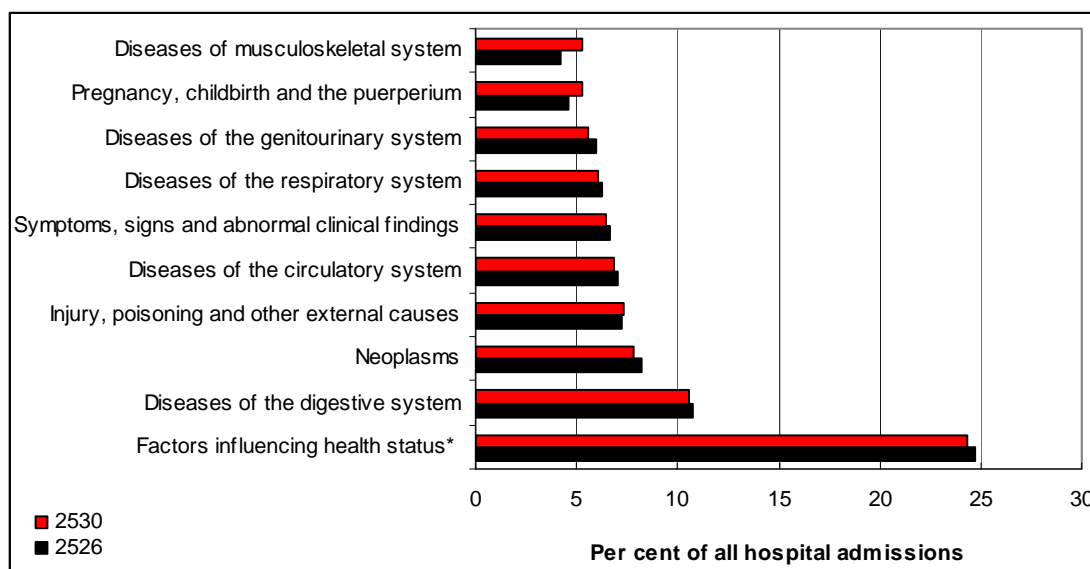
The IRSD scores for postcodes 2526 and 2530 from the 2006 Census were similar – 1015 and 987 respectively. Postcode 2526 was the 398th most socioeconomically disadvantaged postcode in NSW and the 1521st in Australia. Postcode 2530 was the 300th most socioeconomically disadvantaged postcode in NSW and the 1095th in Australia. Considering there are approximately 600 postcodes in NSW, 2526 and 2530 are about average.

5. Health information

As stated above, hospitalisation data is not available by suburb, only postcode; therefore, in this chapter we have used the postcodes 2526 and 2530. Due to time constraints, only hospitalisation data was produced for analysis.

In 2007, 19% of residents living in postcode 2530 and 18% of residents in 2526 were admitted to hospital. The majority of admissions were attributed to 'factors affecting health status' (24.4%) (see appendix 1). This category includes admission for examination, investigation, medical procedures and communicable diseases. The second most common cause for admission was 'Diseases of the digestive system' (10.6%), followed by 'Neoplasms' (8.0%) (Cancers) and 'Symptoms, signs and abnormal clinical findings' (7.1%) (Figure 64). This pattern of presentations was similar to NSW as a whole. As expected, the number of hospital admissions increased with increasing age.

Interestingly, 2526 had slightly higher rates of the top ten hospital admissions than 2530, except for 'Diseases of musculoskeletal system', 'Pregnancy, childbirth and the puerperium' and 'Injury, poisoning and other external causes'.



*see Appendix 1 for full explanation

Figure 64 Top ten reasons for hospital admissions, postcodes 2526 and 2530, 2007.

In 2007, postcode 2526 had a total of 2841 hospital admissions: 1599 males (56.3%) and 1242 females (43.7%). Of these, 35 (1.23%) were identified Aboriginal or Torres Strait Islander and 708 (24.9%) residents were born in a country other than Australia. The average length of stay for people who attended hospital from postcode 2526 in 2007 was 3.6 days. Average length of stay for females was 4.2 days, while it was 3.0 for males; however, the range of days for females was 1-64 days, while for males it was 1-124 days.

Postcode 2530 had 5377 hospital admissions in 2007: 2389 males (44.4%) and 2988 females (55.5%). Of the total hospital admissions, there were 181 (3.3%) residents who identified as Aboriginal or Torres Strait Islander and 1550 (28.8%) residents born overseas. The average length of stay for people who attended hospital from postcode 2526 in 2007 was 3.8 days. This was similar for males and females, with

average length of stay 3.9 and 3.7 days for males and females respectively: the range of days was 1-166 and 1-169 days for males and females respectively.

6. Appendix 1: 'Factors influencing health status'

'Categories Z00-Z99 are provided for occasions when circumstances other than a disease, injury or external cause classifiable to categories A00-Y89 are recorded as "diagnoses" or "problems". This can arise in two main ways:

- a. When a person who may or may not be sick encounters the health services for some specific purpose, such as to receive limited care or service for a current condition, to donate an organ or tissue, to receive prophylactic vaccination or to discuss a problem which is in itself not a disease or injury.*
- b. When some circumstance or problem is present which influences the person's health status but is not in itself a current illness or injury. Such factors may be elicited during population surveys, when the person may or may not be currently sick, or be recorded as an additional factor to be borne in mind when the person is receiving care for some illness or injury. '*

| ICD-10 code | Explanation |
|--------------------|---|
| <u>Z00-Z13</u> | Persons encountering health services for examination and investigation |
| <u>Z20-Z29</u> | Persons with potential health hazards related to communicable diseases |
| <u>Z30-Z39</u> | Persons encountering health services in circumstances related to reproduction |
| <u>Z40-Z54</u> | Persons encountering health services for specific procedures and health care |
| <u>Z55-Z65</u> | Persons with potential health hazards related to socioeconomic and psychosocial circumstances |
| <u>Z70-Z76</u> | Persons encountering health services in other circumstances |
| <u>Z80-Z99</u> | Persons with potential health hazards related to family and personal history and certain conditions influencing health status |

WHO 2007. Available at:

<http://www.who.int/classifications/apps/icd/icd10online/>